

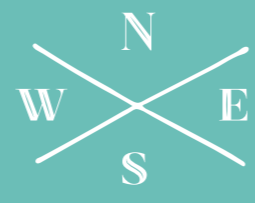


pacific PALMS

HOLIDAY ACCOMMODATION GUIDE



*find
your
space*



COPYRIGHT © Barrington Coast Publishing Pty Ltd 2021.
 Maps are provided as a guide only and are not to scale. No part of these maps may be reproduced, copied or altered without written permission of the publisher.

Contents

- Welcome to Pacific Palms 7
- Getting there 9
- Things to do 11
- Eating and drinking 13
- Blueys Beach 14
- Boomerang Beach 38
- Elizabeth Beach 66
- Seal Rocks 82
- Smiths Lake 90
- Surrounding areas 106

Symbols Key

- Bedrooms
- Bathrooms
- People
- Pets Allowed

Stay where you love...
Love where you stay!

FOR MORE INFORMATION AND BOOKINGS

pacificpalmsholidays.com.au
 (02) 6554 0500

HOURS

Monday - Friday: 9am - 6pm
 Saturday: 9am - 3pm
 Sunday: Closed

We are available after hours for urgent enquiries on (02) 6554 0500

Cover image: Blueys Beach. Image courtesy of Destination NSW.



Clockwise from top left:
 Enjoy breakfast with the kookaburras during a holiday at Pacific Palms,
 Soak in the view from Pacific Palms Recreation Club at sunset,
 Dolphins riding the waves at a beach in Booti Booti National Park
Main image Ash Murray Photography



WELCOME TO *Pacific Palms*

Looking for a relaxing beach holiday just three hours' drive north of Sydney? With its beautiful white sand beaches, spectacular coastal scenery, lakes, national parks and subtropical rainforests, Pacific Palms is the perfect destination. Named after the majestic cabbage tree palms that are abundant throughout the region, Pacific Palms is located just south of Forster on the NSW Mid North Coast and encompasses the coastal hamlets of Blueys Beach, Boomerang Beach, Elizabeth Beach, Smiths Lake and Seal Rocks. There is a special charm that draws people to the 'Palms', and it has a vibe that can't be found anywhere

else on the coast. It's a place of incredible natural beauty, where you can while away your days surfing, swimming or fishing at the beach, go water skiing, kayaking, stand-up paddle boarding or boating on Wallis Lake, Smiths Lake or Myall Lake, or embark on a hike through the rainforest. Shop for local, handmade treasures at community markets, boutiques and galleries, and dine al fresco at one of the area's cafés, clubs or restaurants. Combine this with a community in touch with its natural surroundings, and a wide range of holiday homes to suit any size group or budget, and you have the ideal place for your next getaway.

WHEN TO GO – AVERAGE TEMPERATURES

SEASON	MAX TEMP °C	MIN TEMP °C	WATER TEMP °C
SUMMER (December to February)	27	18	19
AUTUMN (March to May)	24.5	13.5	19.5
WINTER (June to August)	20	8.5	18
SPRING (September to November)	24	13	18



A car driving past Elizabeth Beach.
Image Tom Radcliff

GETTING THERE

Pacific Palms is an easy three-hour drive from Sydney, 1.5 hours from Newcastle, 4 hours from Tamworth and 3.5 hours from Coffs Harbour. Whether coming from the north or the south, you will travel to Pacific Palms via The Lakes Way, off the Pacific Highway. The beauty of the destination is that, although not far, once you arrive it feels like you are a million miles away.

BY ROAD

Take the M1 Pacific Motorway north at Wahrenonga and follow it towards Newcastle, joining the Pacific Highway at Hexham. Three kilometres north of Bulahdelah turn right onto The Lakes Way, towards Forster. From there it is around 30 minutes' drive.

BY PUBLIC TRANSPORT

Busways offers services from Sydney, Broadmeadow Station (Newcastle), Forster and Taree Station. Use the Busways 150 and 151 routes. You can also catch a train to Newcastle or Taree stations and get a bus from there.

busways.com.au



Clockwise from top left:
 Gary Hughes Surf School at Blueys Beach, Pacific Palms is a surfing mecca, and a great destination for whale watching

THINGS TO DO

Without doubt, the area's biggest drawcard is its beaches. You can check out a different stretch of sand every day if you like, with offerings including Blueys Beach, Elizabeth Beach and Boomerang Beach to the north, and Sandbar, Cellito Beach and Number One Beach and Boat Beach at Seal Rocks to the south.

It's also known for its beautiful lakes, and you can go kayaking, stand-up paddleboarding, water skiing, boating and fishing at Wallis, Smiths or Myall Lake. Hike along the Booti Hill Lakeside Walking Track or the Cabbage Palm Loop Walking Track in Wallingat National Park, keeping an eye out for birds including wonga pigeons, king parrots and glossy black cockatoos, as well as wallabies, kangaroos, goannas and echidnas.

Check out the tallest tree in NSW, The Grandis, on the western edge of Myall Lakes National Park, and admire the view from

Sugarloaf Point Lighthouse at Seal Rocks. Spot whales cruising by during their annual migration, from June to November, while dolphins are a common sight year-round.

The Palms is renowned for its world-class surfing, so be sure to hit the beaches. If you need some help with the waves then Gary Hughes Surface has you covered. Gary is an absolute legend, and offers surf lessons for all ages and abilities.

If you're after a spot of retail therapy, than the local shops at Blueys has some great boutiques to browse, including Boomerang Beach Surf Shop and Heidi Beau. Blueys Cellars bottle shop has a yummy deli to peruse, or grab a smoothie or coffee, and some lunch from Drift Cafe. Don't forget about the bakery at Blueys for incredible baked goods

You can also join a yoga or pilates class, or indulge with a facial treatment in the area.



Clockwise from top: Tasting paddle at The Coastal Brewing Co, sweet treats from The Artisan Farmer in NABIAC, dine at Kembali Cafe in Blueys Beach for fresh and healthy food, infused with flavour.



EATING AND DRINKING

The Pacific Palms region has some wonderful dining options. At Blueys Beach, check out the casual eatery Huey's at Blueys pizzeria and bar, which also offers home delivery. Drift Café has great food and coffee. Kembali Café serves Indonesian dishes, plus excellent fruit smoothies.

Soak up the view from the deck at Frothy Coffee Boatshed at Smiths Lake or sip on Italian-style coffee at The Good Food Store, where everything sold is made from scratch on premises, taking advantage of the abundant fresh produce the area has to offer. Don't miss out on sampling the goods from the new Bakery set to appear at Blueys Beach this summer, it's a new venture by the well loved Smiths Lake Bakehouse - which is 100% worth a pop in if you are out at Smiths Lake. Pacific Palms Bowling Club, also at Smiths Lake, has a bistro serving all the classics.

The bistro at The Pacific Palms Recreation Club (colloquially known as The Recky), on The Lakes Way at Elizabeth Beach, is a lovely place to go for lunch or dinner, as you can dine outdoors on the shore of the lake. At Boomerang Beach, check out Sips@Moby's, located at Moby's Beachside Retreat. As the name suggests, they know how to

do a beverage! If you need something to accompany delicious drinks, then their lunch and dinner menu won't disappoint.

The region's proximity to fertile farmlands allows Pacific Palms to embrace a farm-to-table dining philosophy. Many restaurants and cafes collaborate with local farmers to source the freshest produce, resulting in menus that celebrate the flavors of the land. From vibrant salads bursting with color to hearty dishes made with locally raised meats, these dining spots offer a true taste of the region's agricultural bounty. Great Lakes Paddocks, just off The Lakes Way, has a tasting room where groups of up to 10 people can enjoy a wine and cheese paddle. Bookings are essential. Another must visit is a drive away but worth every kilometre. Stop in at NABIAC and discover The Artisan Farmer. Their pies and pastries have a reputation, but truly anything from here is to die for! Plus with garden, deli and wagu farm, bakery and cafe, there's a generous selection to choose from.

If seafood is more your thing, make sure to stock up on fresh seafood at Red Spot Jetty in the heart of Forster.



Blueys Beach

Known for its guarantee of a good wave, Blueys Beach is a popular choice for surfers. With its pristine white sand and crystal-clear water, it's no wonder so many people have bought or built holiday homes on the foreshore, headland and points beyond. Between Sandbar Beach to the south and Boomerang Beach to the north, Blueys is said to have been named after a cow named Bluey who suffered a misadventure en route to Yarric Mountain, the hill on the southern end of the beach. It also has a cute village, with cafes, restaurants and shops.

MAP INDEX

1	AIYANA	18	ILUKA - BLUEYS BEACH
2	ALL 2 HEAVENLY	19	LAWSONS AT BLUEYS
3	ALLURE ON BLUEYS	20	LAZULI
4	AQUA APARTMENTS	21	NAUTILUS
5	AQUA VIEW	22	PALMS HOUSE
6	ARKON	23	PANORAMA
7	AT BLUEYS	24	PONDEROSA
8	BANKSIA	25	SANDY FEET
9	BAREFOOT ON BLUEYS	26	SEACREST ON BLUEYS
10	BEACH BAY BEE ON BANKSIA	27	SEAMIST AT BLUEYS
11	BLENCATHRA BY THE SEA	28	SUMMER FOLLY 1
12	BLUEYS BEACHCOMBER	29	SUMMER FOLLY 2
13	BOOF'S AT BLUEYS	30	SUNSETS
14	BREAKAWAY @ BLUEYS	31	THE BEACH SHACK
15	BURALO	32	TRUE BLUE
16	BURTS @ BLUEYS	33	VILLA MANYANA
17	HUEY'S LOOKOUT	34	VISIONS 2



Welcome to Blueys Motel

Located in the heart of the village at Blueys Beach, Pacific Palms, and just 200m from the beach, this boutique 4 star motel offers 10 stylishly appointed rooms each with their own unique touches. Pacific Palms epitomises the perfect coastal holiday, with sparkling beaches, excellent surf and vast areas of national parks ready to be explored. And once you've enjoyed your time exploring the local area, retreat back to the motel to enjoy an afternoon poolside or a leisurely soak in the spa.



Outdoor art installation @ONESQUAREGALLERY



Blueys
MOTEL

blueysmotel.com.au
02 6554 0665
186 Boomerang Drive, Blueys Beach
info@blueysmotel.com.au



AIYANA

97 NEWMAN AVENUE, BLUEYS BEACH

Coastal indulgence awaits at this luxury beach house at the Southern end of Newman Avenue at Bluey's Beach. Ocean views span across Blueys Beach, which is a mere stone's throw across the road. Sleeping 10 across 2 levels. The upper level boasts an open-plan lounge with air conditioning, dining, and a fully equipped kitchen. Down the hallway takes you to the main bedroom with luxury ensuite and bathtub. Downstairs you will find 3 bedrooms with ceiling fans – a



 4  2  10

queen bed, 2 single beds, and a family/extra TV room with a queen bed and 2 single beds. Outdoors you will find plenty of space with grassy lawns and a sunken firepit with circular seating area. Double garage for guests' use. Outdoor shower with hot and cold water. Large glass doors take you out onto the upper and lower decks with outdoor seating, and stunning ocean and beach views. Come and indulge in luxury at Aiyana (pronounced A Yarna)!



ALL 2 HEAVENLY

7 NEWMAN AVENUE, BLUEYS BEACH

Directly across the road from the beach, this two-storey home with ocean views is ideally designed for two families holidaying together, with a self-contained downstairs area with its own bedroom, kitchen and living quarters. A short stroll from shops and cafes, it has a saltwater pool, open-plan living areas, an enclosed yard and three outdoor entertaining areas, including a deck with views spanning to Seal Rocks, another overlooking the pool, and a large undercover alfresco



 5  2.5  12

area beside the pool. Altogether, there are five bedrooms, two with queen-size beds, two with a double and two singles (with bi-fold doors between them that can be opened to convert to one large room) and one with a triple bunk bed and a second bunk bed. The kitchen has a dishwasher and a microwave, and the dining table seats six. The large open-plan living area upstairs has a large TV, DVD player and pay TV. Linen is supplied.



ALLURE ON BLUEYS

2/12 NEWMAN AVE, BLUEYS BEACH

With Blueys Beach right on your doorstep, you can sit back and relax on a sun lounger and watch pods of dolphins and whales frolicking from the backyard of this well-appointed, stylish duplex. It has two bedrooms upstairs, including one with a king-size bed with a ceiling fan and a private balcony overlooking the ocean with an outdoor setting, and an ensuite with a shower and toilet. The second bedroom has two bunk beds, while there's also another bathroom with a shower and separate toilet. The third bedroom is downstairs and has a queen bed. Downstairs also has a



3 2 5

bathroom with a shower and toilet, a tiled open-plan living and dining area with a flatscreen TV, DVD player and CD player with iPod dock. A high chair and child gate are also available. The kitchen has a microwave, dishwasher, electric oven and stove with a rangehood, and there's a covered deck with an outdoor setting and a courtyard garden with a hooded gas barbecue. There's also a garage with room for one car and the laundry, also in the garage, has a top-loader washing machine and a dryer.



AQUA APARTMENT # 2

2/184 BOOMERANG DRIVE, BLUEYS BEACH

2 1 6

This cosy apartment has a nautical theme, with wooden oars hanging on the wall behind the corner ounge in the living room. This cosy apartment has a nautical theme, with wooden oars hanging on the wall behind the corner ounge in the living room. One bedroom has a queen-size bed while the second has two bunk beds, making it ideal for a family of four. The large, modern kitchen has a microwave and an oven, with two chairs at the benchtop. There's also a four-seater dining table for family meals, and a TV mounted on the wall above it.



AQUA APARTMENT # 3

3/184 BOOMERANG DRIVE, BLUEYS BEACH

2 1 4

This bright and colourful apartment is sure to put you in the mood for a happy holiday. Boasting two bedrooms furnished with comfortable queen-size beds, it ensures restful nights. The tiled living space opens up to a charming courtyard through sliding doors, creating a seamless indoor-outdoor experience. The modern kitchen, equipped with a microwave, oven, stainless steel dishwasher, and fridge, exemplifies sleek functionality. Additionally, a spacious dining area hosts a lengthy table accompanied by three chairs, perfect for cozy gatherings and delightful meals.



AQUA APARTMENTS

These well-appointed, self-contained apartments each have their own private courtyard and are within easy walking distance of cafés, shops and the beach. WiFi is available in all, linen is supplied. Strictly no pets allowed.



AQUA APARTMENT # 1

1/184 BOOMERANG DRIVE, BLUEYS BEACH

2 1 4

The contemporary apartment boasts an elegant kitchen equipped with a built-in microwave, oven, and dishwasher, exuding style and functionality. Each of the two bedrooms features comfortable queen-size beds for a restful stay. Entertainment amenities include a TV and DVD player. The living area showcases a ceiling fan and a spacious four-seater table on its tiled floors, creating a welcoming ambiance. Opening onto a charming courtyard, this area invites relaxation and outdoor enjoyment.



AQUA APARTMENT # 4

4/184 BOOMERANG DRIVE, BLUEYS BEACH

2 1 4

This lovely apartment comes with a large corner lounge, carpeted floors and a four-seater table in the open-plan living area. The two bedrooms offer versatile accommodation options, with one hosting a luxurious queen-size bed and the other equipped with a convenient bunk bed arrangement. A delightful courtyard awaits outside, furnished with an inviting outdoor setting ideal for hosting gatherings of up to four individuals. The well-appointed kitchen, adorned with tiled floors, is equipped with modern amenities including a dishwasher, microwave, and oven.



Image courtesy of Destination NSW.



AQUA VIEW

21 HEADLAND ROAD, BLUEYS BEACH

Experience the breathtaking panorama of Boomerang Beach and its lush surroundings from this exceptional vantage point. Positioned perfectly between Boomerang and Blueys beaches, this stunning family retreat offers an unparalleled holiday escape. Marvel at the sweeping views of Boomerang Beach from the headland, where you can witness playful whales and dolphins or leisurely wander to the nearby cafes in just a 4-minute stroll. Adorned with magnificent vaulted

ceilings and exquisite plantation shutters, this home boasts sun-drenched living spaces indoors and outdoors that beckon for relaxation. Embrace the charm of entertaining on the north-facing deck during summer evenings. Now equipped with WiFi for added convenience, along with an additional TV downstairs, this home ensures a delightful stay filled with comfort and entertainment for the whole family.



AT BLUEYS

2/16 NEWMAN AVENUE, BLUEYS BEACH

This ground-floor beachfront apartment offers direct access to Blueys Beach, an ideal haven for couples seeking a serene getaway. Boasting a single bedroom, this holiday retreat presents an unparalleled opportunity to bask in the tranquility of a beachfront escape. Step out onto the grassy yard, leading seamlessly to the sandy shores, perfect for sunbathing and reveling in the beauty of Blueys Beach

mere steps away. With full linen provided, all you need to bring are your beach towels to complete your stay. There is a property upstairs that is solely utilized by the owners on occasion, however, you will have the whole apartment to yourself. Indulge in the peaceful seclusion of this beachfront abode, where the pristine beauty of the coastline awaits your enjoyment.



ARKON

85 NEWMAN AVENUE, BLUEYS BEACH

Arkon is a beach front luxurious holiday home at Blueys Beach with everything you would expect for a 5 star stay! Positioned right alongside the captivating expanse of Blueys Beach, it provides uninterrupted vistas of the ocean. This two-story haven encapsulates the essence of a perfect beach getaway, adorned with exquisite details including; A generously sized SmartTV mounted on the wall; An in-built

ice machine within the refrigerator; Underfloor heating in all bathrooms; Heated towel rails in each bathroom; Ceiling fans in every bedroom; Dual-zone air conditioning, both upstairs and downstairs. The home is tailored to accommodate two families or a close-knit group of mature friends, ensuring comfort and ample space for everyone to relax and enjoy their stay.



BANKSIA

1/6 BANKSIA STREET, BLUEYS BEACH

This stylish pet-friendly property has lovely interiors, including polished timber floorboards and louvre windows, and a deck overlooking the garden, which boasts an outdoor shower. There's a TV and DVD player in the living area, and the kitchen has a dishwasher, microwave, electric oven and stove. The kitchen and dining area open out to the deck, where you can cook up dinner on the gas barbecue.

The main bedroom has a queen-size bed and balcony access. The second bedroom has two single beds, while the third has a triple bunk bed (single over double), and both lead out to the garden. The laundry is located in the double garage and has a washing machine and a dryer.





BAREFOOT ON BLUEYS

70 NEWMAN AVENUE, BLUEYS BEACH

With soaring ceilings and exposed beams, this beautiful beachfront home combines cosmopolitan Hamptons styling with an eclectic mix of old. There's an outdoor wood fireplace and outdoor setting in the garden, or unwind on the beachfront deck, which has a timber outdoor setting, gas barbecue and direct access to the beach. The master bedroom has a queen-size bed and opens onto to the front deck. The second bedroom, which also has access to the deck, has a double bed while the third has two king single beds. All have ceiling fans. The bathroom has a shower with underfloor

heating and a heated towel rail. The kitchen boasts upscale Miele appliances, including a dishwasher, microwave, gas stove and electric oven, while the living area has a Bose iPod dock, flat screen TV with a DVD player and a DVD library. There's also a combustion fireplace in the open-plan living and dining area, which has timber floors and opens onto the deck. The laundry, located in the double garage, has a Miele front load washing machine and a dryer. There's also a ping pong table in the garage, and the property has solar heating and rainwater storage tanks.



BEACH BAY BEE ON BANKSIA

2/6 BANKSIA STREET, BLUEYS BEACH

Beach Bay Bee is located just a short stroll from the Blueys Beach look out and the local shops and cafes, Beach Vay Bee is an incredible property to spend a week, a weekend or the whole summer! Relax, listen to the surf, and enjoy partial water views. Featuring three entertaining decks, including one with a sunken bath, this truly is a slice of luxury in The Palms. There are three bedrooms, two with Queen beds, and

one with a King Single and a trundle, making it the perfect family getaway. You can even bring the whole family, as four-legged members are welcome on an application basis. The expansive open-plan kitchen offers plenty of space for cooking should you choose, or making a cheeseboard if that's more your taste!



BLENCATHRA BY THE SEA

76 NEWMAN AVENUE, BLUEYS BEACH

Blencathra by the Sea sits atop Newman Avenue, beachfront at Blueys Beach, and encompasses 180-degree vistas across the Pacific Ocean. This stunning luxe beach holiday home offers numerous entertaining options, centred by a black infinity pool; flanked by lush manicured gardens and olive tree trellises. Cubist modernist home designed with galleries of floor to ceiling glass to catch whales migrating or dolphins

frolicking in the waves in your very own beachfront oasis. The front modern building encompasses 2 main bedrooms and bathrooms, with entertaining spaces downstairs, butler's pantry and powder room. The back building encompasses another 2 modern bedrooms, and bathroom, laundry. Blencathra by the Sea at Blueys is the ultimate beach front holiday escape, and it's exclusively all yours!



Image Courtesy of Destination NSW



BLUEY'S BEACHCOMBER

11 AMPAT PLACE, BLUEYS BEACH



Unique retro inspired Scandi holiday home a short flat walk to Blueys Beach, featuring a rural back drop and a large grassy yard. Beachcomber has a front deck with BBQ, and a back deck overlooking the rural landscape in Blueys Beach. The backyard is huge and the peace and quiet looking out to the hills is inviting. Bluey's Beachcomber is an elevated home with large glass windows and verandah that wraps around the house, making the most of the indoor-outdoor space, and

light. The open-plan kitchen and dining opens to a cosy fire place where you can easily spend your evenings with a good book and a glass of wine. A selection of games and books is provided. There are 3 bedrooms, two upstairs and the third on the lower level. The property has a laundry with an extra toilet. Plus, coming back from the beach is made easier with an outdoor hot and cold shower to wash the golden sands off after a glorious day at the beach.



BOOF'S AT BLUEYS

7 CROLL STREET, BLUEYS BEACH



Boof's at Blueys is right in the heart of Blueys Beach, only a short walk from the beach or that morning coffee. Coastal modern style awaits with modern furnishings and thoughtful touches throughout. Spacious 4 bedroom home with 2 bathrooms, with an open style living and kitchen area perfect for entertaining that opens directly onto the Japanese style inner courtyard and outdoor dining area, complete with landscaped grounds and gardens. Boof's is fully fenced. The living/dining area includes an entertainers kitchen with

a large kitchen island. The spacious Butlers pantry includes a dishwasher, microwave, Nespresso coffee maker and washing machine. An 8-seat dining table looks over the courtyard. The living space contains a modular lounge, a Smart TV with Netflix and a DVD library, air conditioning and a ceiling fan. All bedrooms have ceiling fans, and the 4th bedroom is separate to the main house with a sitting space and TV, and is next to the main house in the courtyard area. (This room would not be suitable as a bedroom for young children on their own.)



BREAKAWAY @ BLUEYS

103 NEWMAN AVENUE, BLUEYS BEACH



Sprawling across 3 levels, you will never want to leave! Perfect for families or a mature group of friends! The lower level houses the double garage with entrance directly into the foyer. There is a family/TV room/lounge on this level with 2 large bedrooms with a Queen bed and the other with 2 king singles (this can be made into a king bed if required). Underfloor heating in these areas. There is a bathroom on this level with shower and toilet. Both bedrooms have their own glass sliding doors that take you outside to the garden areas. The middle level includes a well thought out large kitchen with quality appliances, butlers pantry, laundry and bathroom, and

underfloor heating, living and dining room areas creating a wonderful feeling of space. The middle level is the hub of the house and is purely for entertaining! There is a formal lounge area with large smart TV and air conditioning. Along with another large lounge area with an entertaining area housing a large dining table, gas heater, kitchenette and bar fridge. The upper level has a main bedroom with a King bed, large luxury ensuite and walk in wardrobe. The luxury ensuite has a shower with 3 shower heads and a large spa bath. There is another bedroom on this level with a Queen bed, with a balcony and stunning ocean views.



BURALO

33 NEWMAN AVENUE, BLUEYS BEACH



Buralo - Irish name meaning 'wolf'. Luxe and modern, this spacious coastal holiday home is sprawled across 2 levels. Clever design has created a welcoming light-filled oasis with a focus on lifestyle. Sheltered from the south and north easterly winds, the sun-drenched poolside living spaces are a natural extension of the indoors. The home's contemporary design, adorned with soaring 3-meter-high ceilings, amplifies its already impressive dimensions. The ambiance is further

enriched by a refined palette featuring gentle pastel tones and repurposed Blackbutt timber, complemented by opulent Italian tiles that exude extravagance. Functionality meets elegance within this residence, highlighted by a European-style kitchen centered around a grand 3-meter-long Caesar stone-topped island bench. Situated on a level block within Newman Avenue's heart, it allows for a leisurely stroll across to Blueys Beach just opposite.



BURTS @ BLUEYS

1/23-25 NEWMAN AVENUE, BLUEYS BEACH

Beautifully decorated beach house across the road from Blueys Beach - beach views from the bedroom upstairs. This charming abode spans two levels, boasting a secluded garden courtyard with enclosed yard, outdoor seating and BBQ. The lower level presents an expansive open-plan layout perfect for entertaining, featuring a fully equipped kitchen, a generously sized dining table, and a spacious corner sofa for utmost comfort. Ascending to the upper floor reveals the main bathroom, complete with a luxurious bathtub, ideal for indulging in the calming ambiance of beachside living.



 4  2  9

Additionally, the lower level hosts an extra powder room for added convenience, while an exclusive outdoor shower equipped with both hot and cold water awaits, providing a refreshing experience after a day spent by the waves. This elegantly furnished beach retreat is a harmonious blend of style and function, offering a serene haven for relaxation and enjoyment amidst the coastal beauty. Its thoughtful design and array of amenities ensure a delightful and comfortable stay, inviting guests to immerse themselves in the laid-back coastal lifestyle.



ILUKA - BLUEYS BEACH

187 BOOMERANG DRIVE, BLUEYS BEACH

The contemporary beachfront residence prioritizes seclusion and intimacy, boasting serene views of lush gardens and surrounding woodlands. This two-bedroom modern dwelling epitomizes the ultimate beach retreat. The primary bedroom, furnished with a Queen-sized bed and equipped with a television, seamlessly connects to an expansive deck. The interconnected lounge and dining spaces extend onto a spacious entertaining deck, featuring a wall-mounted 100cm widescreen TV, Foxtel, DVD & CD player, and WiFi accessibility. Accommodating off-street parking includes a single garage



 2  1  4

for added convenience. An assortment of DVDs in the cupboards complements the thoughtful details sprinkled throughout the home. Ensuring utmost comfort, the house is equipped with ducted air conditioning, while a Nespresso coffee pod machine stands ready for your convenience. The well-equipped kitchen boasts modern amenities such as a microwave and dishwasher. Additionally, the laundry area is furnished with a front loader washing machine and dryer for your convenience.



HUEY'S LOOKOUT

6 BLUEYS WAY, BLUEYS BEACH

With its Hampton-inspired interiors and private access to the beach, it doesn't get much better than this oceanfront home. Huey's Lookout watches over beautiful Blueys Beach and Boomerang Point, with uninterrupted views all the way to Seal Rocks in the south. Upstairs is the master bedroom with a walk-in robe, ensuite bathroom and raised king-size bed, from where you can enjoy incredible views of the Pacific Ocean each morning. The open-plan kitchen, dining and lounge area takes full advantage of the views and connects to a large deck where you can enjoy the property's beachfront setting. In the light-filled kitchen, you'll find a Smeg gas stove,



 4  2  10

dishwasher and island stone benchtop, plus a wine fridge to keep your bottles at the perfect drinking temperature. Downstairs are three more bedrooms with queen-size and twin bed configurations, which cater to both families and groups of friends. As well as a large bathroom and laundry, the lower level also has an outdoor shower where you can rinse off after a day at the beach. The media room makes the perfect kids' escape and complimentary Wi-Fi is included. You can take advantage of the double garage to park your cars and let your pets run around in the fully fenced yard.



LAWSONS AT BLUEYS

2/80 NEWMAN AVENUE, BLUEYS BEACH

Located at the southern end of the beach with views all the way to the lighthouse at Seal Rocks, this air-conditioned top floor apartment with raked ceilings provides the perfect viewing platform to watch migrating whales or dolphins at play. The master bedroom has a queen-size bed with access to a private balcony, while the second bedroom has two single beds. The open-plan living area, which opens onto the deck, has a combustion fireplace, with wood supplied during winter,



 2  1  4 

a TV, CD player and DVD player. The kitchen has an electric oven and stove with a separate grill, dishwasher, microwave and coffee machine (ground coffee), while the combined laundry and bathroom has a shower, toilet and mini bath with a deep base and a top-loader washing machine. There's also an outdoor shower, gas Weber barbecue and outdoor setting and off-street parking for two cars. Pets are welcome, but the property is not fenced.



LAZULI

4 VIEW STREET, BLUEYS BEACH

Lazuli invites you to uncover the genuine essence of Blueys at their stunning residence, a haven that embodies the true essence of the color 'blue.' This expansive coastal home offers an idyllic setting overlooking the serene rural landscape of Blueys Beach, boasting a crystalline blue pool as its centerpiece. Whether you seek a brief weekend retreat or an extended stay, this space is tailored for families or mature friend groups seeking tranquility and comfort. Step into a spacious sanctuary featuring an outdoor haven adorned with dining facilities, a cozy lounge area, and a BBQ setup. Expansive glass sliding

doors seamlessly connect the airy lounge to the outdoor space, revealing a captivating poolside vista amid the picturesque rural panorama. A generous sun deck awaits, perfect for early morning yoga sessions or sun-soaked relaxation following a refreshing swim. Nestled within a tranquil street in Blueys Beach, Lazuli offers a serene ambiance where one can immerse in the rural scenery and unwind completely. Additionally, the residence enjoys convenient proximity to local amenities such as shops, cafes, and the famed Blueys Beach, ensuring a seamless and delightful seaside escape for your next retreat.



PALMS HOUSE

3 ALAMAU PLACE, BLUEYS BEACH

Nestled in a quiet cul-de-sac at the southern end of Blueys Beach with a peaceful, rural backdrop, Palms House offers the perfect mix of coast and country. There are three bedrooms upstairs, one with a queen-size bed, one with a double and one with two singles. All have ceiling fans. There's also a bathroom with a shower and toilet, a kitchen with a microwave, dishwasher, oven and stovetop and an open-plan living room opening onto both the front and back decks, with a

ceiling fan, TV and DVD player, gas heating and Wi-Fi. The rear deck has a gas barbecue and outdoor setting with access to the backyard and neighbouring reserve. The fourth bedroom, which has a double bed, bunk bed and single bed, is located downstairs, along with the laundry, a second bathroom, a rumpus room with an Apple TV and a single garage. There's also plenty of room for off-street parking. Pets by application, but the property is not fully fenced.



NAUTILUS

44 NEWMAN AVENUE, BLUEYS BEACH

With stackable glass doors opening from the open-plan kitchen and dining area onto a large deck overlooking the beach and plantation shutters, this home has a lovely feeling of bringing the outdoors in. There are two bedrooms with queen-size beds and ceiling fans upstairs and a third with a double bed, as well as a shower and toilet. The kitchen has a dishwasher, free-standing electric stove and oven, microwave, Nespresso pod coffee machine and espresso coffee machine and there's a TV room with a DVD and CD player. As well as the main

deck, which has a gas barbecue, outdoor setting and stairs leading down to the back garden, there's a small second deck overlooking the front garden. Downstairs, which can only be accessed externally, you'll find the remaining two bedrooms; one with a queen bed and the other with three singles and a trundle. There's also a family room with a TV and DVD player, a laundry with a top-loader washing machine, dryer and a bathroom and separate toilet. Off-street parking is available and pets by application.



PANORAMA

46 NEWMAN AVENUE, BLUEYS BEACH

This pet-friendly beachfront home certainly lives up to its name, with wonderful views of the Pacific Ocean from the deck, living and dining area and gourmet kitchen. Ideal for families who want to holiday together, the inviting two-storey house has cathedral ceilings, a combustion fireplace and polished timber floors. Two bedrooms have king beds with ceiling fans, one has a queen bed while one has a single and a bunk bed. The fifth bedroom, or rumpus room, has a single bed and bunk bed, with kids' games, books, a TV with Foxtel,

a DVD player and a sofa bed. The kitchen has a stainless steel microwave, dishwasher and De'Longhi coffee machine. The open-plan living area flows seamlessly outdoors and features a Samsung Smart TV, Foxtel and a Yamaha surround-sound system. A second lounge area opens up to both the front and back decks and has a Bose Bluetooth speaker, an open fireplace, and superb views. There are also two terraces and parking for two cars.





PONDEROSA

202 BOOMERANG DRIVE, BLUEYS BEACH

Designed to sleep up to 10 people, Ponderosa is a stunning five-bedroom, three-bathroom beach house in Blueys Beach. It's a short stroll from the cafes, shops and restaurants of this beautiful seaside town and enjoys stunning views across a palm-studded reserve. In addition to a master bedroom with a king-size bed and ensuite bathroom, there are two queen bedrooms and one double. The fifth bedroom has two single beds, making the property ideal for the extended family or two

groups travelling together. The open-plan living and dining space features high raked timber ceilings while the gourmet kitchen is equipped with all the modern appliances you can imagine, plus a walk-in butler's pantry. At the end of a day enjoying the sun and surf of Blueys Beach, you can retreat to Ponderosa's wide verandah for drinks and alfresco dining. Completing the package is a luxurious swim spa that's set within a glass-walled, tropical-inspired courtyard.



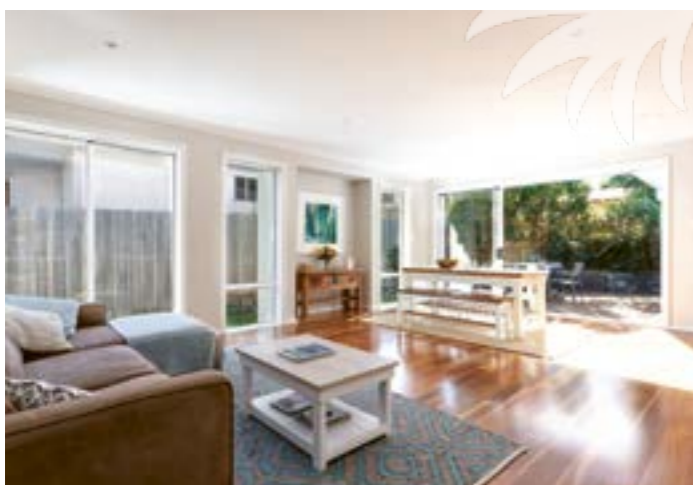
SEACREST ON BLUEYS BEACH

1/2 BANKSIA STREET, BLUEYS BEACH

Offering spectacular views stretching south to Seal Rocks, this three-bedroom duplex lies at the northern end of Blueys Beach, with the sand just a stone's throw away. It's designed across two levels, with a kitchen upstairs that features modern stainless steel appliances, including a dishwasher and a microwave. Both the king-size and queen-size bedrooms are located on the upper level and boast ocean views while a downstairs bedroom is equipped with two bunk beds. The main bathroom has a full-size bath and shower and there are two separate toilets – one



upstairs and the other downstairs. Wake up to enjoy a coffee from the espresso machine before soaking up the panoramas from the terraced garden. It comes complete with outdoor furnishings, an outdoor shower and a gas barbecue, as well as direct access to the beach. Complimentary Wi-Fi, a TV equipped with Foxtel and a Bluetooth-enabled sound system are also available, as is a top-loader washing machine, clothes dryer and an extra shower in the laundry.



SANDY FEET

3 VIEW STREET, BLUEYS BEACH

Just a minute's stroll from the beach, this stylish, modern house is in a convenient location near Blueys Beach village. It's ideal for families wanting to holiday together, with two queen-size bedrooms (one with an ensuite) and two twin-bed rooms that are perfect for kids. It's set on one level, with a light-filled open-plan living area, a study space and a TV room that's equipped with a SmartTV. You'll find all the modern appliances

you need in the large kitchen, including a dishwasher, while the laundry is equipped with a top-loader washing machine. The entire home is decorated with beach-inspired contemporary furnishings and offers Wi-Fi. In the evenings, you can relax in the private outdoor entertaining area that's complete with a barbecue grill while the kids run loose in the fully enclosed yard.



SEAMIST AT BLUEYS

69 NEWMAN AVENUE, BLUEYS BEACH

Seamist stands as a testament to the classic essence of beach holiday residences, embodying the quintessential getaway with a blend of modern conveniences. This charming abode offers essential amenities like WiFi, ducted reverse cycle air conditioning, and an expansive yet vintage-style kitchen equipped with a dishwasher, microwave, large fridge, electric cooktop, oven, and a Nespresso Pod Coffee Machine. Its layout



boasts two spacious decks flanking either side of the house, creating inviting spaces for relaxation and entertainment. One deck features a barbecue setup alongside an outdoor dining table, perfect for indulging in leisurely summer days. Seamist captures the essence of coastal living while ensuring a comfortable and contemporary stay for guests.





SUMMER FOLLY 1

1/177 BOOMERANG DRIVE, BLUEYS BEACH

Ideally situated between Boomerang and Blueys beaches and just a short stroll from local shops and cafes, Summer Folly comprises two standalone properties. Both have four bedrooms that can accommodate up to eight people, as well as light-filled living spaces, fully-equipped kitchens and outdoor decks for enjoying the ocean views. Surrounded by fragrant gum trees, Summer Folly 1 is set across two levels, with sloping ceilings, polished floors and exposed beams.



Upstairs is a queen-size bedroom with an ensuite and access to a private balcony while downstairs is another queen-size bedroom and two rooms with twin single beds. It's also here that you'll find the main bathroom with corner shower and a laundry with a top-loader washing machine and a dryer. The contemporary kitchen is well-equipped with modern appliances and connects to an open-plan living/dining area with a flatscreen TV and WiFi.



SUNSETS

9 REEF CIRCUIT, BLUEYS BEACH

This brand new holiday home has an open plan family/entertaining area leading to large glass sliding doors that open to a sparkling elevated pool capturing evening sunsets across the mountains. Covered outdoor entertaining area with outdoor dining table and seating around the pool - this will be a family holiday to remember always! You can walk along the footpath all the way to Blueys Beach, local shops and restaurants such as Drift Cafe and Kembali. We have four



bedrooms, the main being upstairs with a king bed, walk in robe and ensuite, another 2 bedrooms upstairs with queen beds and a main bathroom - that has a large free standing tub to indulge after a big day at the local beaches. Downstairs has a queen bed and ensuite. All beds have fresh linen and towels provided. You just need to bring your pool/beach towels. Study nook upstairs if you need to work away from home, whilst enjoying this gorgeous holiday home.



SUMMER FOLLY 2

2/177 BOOMERANG DRIVE, BLUEYS BEACH

This character-filled four-bedroom home, which can accommodate up to eight people, has light-filled living spaces, a fully-equipped kitchen and an outdoor deck for enjoying the ocean views. Set across two levels, it has three queen bedrooms - one upstairs with an ensuite and two downstairs, as well as another room with two bunk beds. The bathroom has a corner shower and separate toilet while



the laundry has a top-loader washing machine and a dryer. Upstairs is a bright and airy open-plan living space with a fully-equipped kitchen, dining table and comfortable lounge room. In the evenings, you can take advantage of the TV, DVD and CD player or enjoy a barbecue on the large deck while watching the sunset. Unfortunately, this home is not suitable for anyone with impaired mobility.



THE BEACH SHACK

29 NEWMAN AVENUE, BLUEYS BEACH

Located along the prestigious Newman Avenue at Blueys Beach within a short stroll to the beautiful Blueys Beach and local shops for your early morning surf or coffee.. this is the perfect holiday accommodation for families or a group of friends - with 2 beach houses linked by a large undercover entertaining area, grassed yard and playground for the kids



or big kids at heart. Gas fireplace in the open lounge area, under the Smart TV, for those cooler nights and seasons. The kitchen is fully equipped and has a butlers pantry with modern appliances.



TRUE BLUE

55 NEWMAN AVENUE, BLUEYS BEACH

Nestled in tranquil, rural surrounds, this single-storey holiday home has been designed with earthy tones as a peaceful retreat. It features two queen-size bedrooms with built-in robes, one of which has an ensuite bathroom, as well as an additional room equipped with two bunk beds. There are floor-to-ceiling glass windows in the lounge area through which you can soak up the countryside views, as well as a dining table that seats eight, a Bluetooth-enabled HDTV and a Blu-ray DVD player. Cosy up beside the open fireplace in



3 2 8

the winter months or step out into the alfresco entertaining area for a barbecue and hit of table tennis in the summer. There's an outdoor shower where you can rinse off when you return from Blueys Beach, which is an easy 120-metre stroll away, while the town's cafes and shops are just 400 metres from the property. The laundry is equipped with a top-loader washing machine, a dryer and shower, which is additional to the shower in the main bathroom. Pets are welcome outside, although the property is not fully fenced.



VILLA MANYANA COMPLEX

Choose from one of 11 villas in this Spanish Mission-style complex, which has a fenced communal pool and wood-fired barbecue in the garden area, with off-street parking for one car per villa. It's a short walk to shops, cafes and restaurants. Interiors vary between villas. All have a combined bathroom and laundry and a separate toilet and are BYO linen – pillows, blankets and doonas are supplied. Strictly no pets allowed.



BLUEYS BEACH VILLA MANYANA 2 - MIDDLES

2/13 BANKSIA AVENUE, BLUEYS BEACH

2 1 5

This modern, refurbished upstairs villa has a master bedroom with a double bed and a ceiling fan while the second bedroom has a triple bunk bed (single over double). The kitchen has Caesarstone benchtops, a microwave, Miele dishwasher, electric oven, stovetop and extractor fan, while the open-plan living area has a ceiling fan, iPod dock, wall-mounted flat screen TV and a DVD player. There's also a Weber Q gas barbecue and an outdoor setting on the private balcony.



BLUEYS BEACH VILLA MANYANA 11

11/13 BANKSIA STREET, BLUEYS BEACH

2 1 5

With modern decor and furnishings, this villa comes complete with a new front-loader washing machine and dishwasher plus Wi-Fi. The kitchen also has a microwave and a free-standing cooker with separate grill. The master bedroom has a queen-size bed while the second bedroom has a triple bunk bed (single over double). The open-plan living area has a leather lounge, a dining table and chairs, a flatscreen Smart TV, DVD player and electric heating. There's a private, rear balcony with a gas Weber barbecue, as well as a front balcony with seating.



BLUEYS BEACH VILLA MANYANA 14

14/13 BANKSIA STREET, BLUEYS BEACH

2 1 6

This well-kept air-conditioned villa offers a picturesque view of the pool within the complex. The main bedroom boasts a spacious queen-size bed, while the second bedroom is equipped with two sets of bunk beds. The kitchen is furnished with a convenient microwave, and the open-plan living area features a sizable flat-screen TV and a DVD player, perfect for entertainment and relaxation. Overall, this villa provides a comfortable and welcoming environment, ideal for a relaxing stay while enjoying the amenities and comfort it offers.



BLUEYS BEACH VILLA MANYANA ALOHA AT BLUEYS

17/13 BANKSIA STREET, BLUEYS BEACH

2 1 5

This recently refreshed and refurbished upstairs Villa has 2 balconies to capture the breeze and is well-equipped for a relaxing comfortable holiday. Hosting up to six guests across two bedrooms—a queen-sized bed in the primary room and a second room featuring a tri-bunk (a double bed with a single above) along with a rollaway underneath—the villa caters to diverse accommodation needs. The outdoor charcoal BBQ area invites al fresco gatherings, allowing guests to bask in the coastal breeze while serenaded by the soothing sounds of the surf.



BLUEYS BEACH VILLA MANYANA 24

24/13 BANKSIA STREET, BLUEYS BEACH

2 1 6

With a queen-size bed in the master bedroom and two bunk beds in the second room, this villa would suit a family with up to four kids. The renovated kitchen has a dishwasher, microwave, electric oven, stove and rangehood. The open-plan living area has tiled floors, with a large flatscreen TV and a DVD player.



BLUEYS BEACH VILLA MANYANA 25
25/13 BANKSIA STREET, BLUEYS BEACH



This first-floor villa has a queen-size bed in the master bedroom and two bunk beds in the second bedroom. The renovated kitchen has a microwave and a freestanding oven with separate grill and access to a private balcony. The open-plan living area has a TV and DVD player, and there's a top-loader washing machine in the laundry.



BLUEYS BEACH VILLA MANYANA 26
26/13 BANKSIA STREET, BLUEYS BEACH



Boasting modern decor and furnishings, including artwork by award-winning Australian artist Sally West, this villa comes complete with ceiling fans, a front-loader washing machine and dryer and a Weber gas barbecue. It offers ocean glimpses from a private balcony, with a queen-size bed in the master bedroom and a triple bunk bed (single over double) in the second bedroom. The kitchen has an Expressi coffee machine and access to the balcony. The open-plan living area has a leather lounge, a flatscreen SmartTV, DVD player, stereo and iPod dock, CD Player and electric heating.



BLUEYS BEACH VILLA MANYANA 30
30/13 BANKSIA STREET, BLUEYS BEACH



With a queen-size bed in the master bedroom and a triple bunk bed (single over double) and a trundle bed in the second bedroom, this first-floor villa would suit a larger family. The modern kitchen has a microwave, electric oven and stove and there's a private balcony with a barbecue and ocean glimpses.



BLUEYS BEACH VILLA MANYANA 32 - SURFSEA
32/13 BANKSIA STREET, BLUEYS BEACH



This ground-floor villa has tiled flooring throughout with a renovated bathroom. There's a queen-size bed in the master bedroom and two single beds and trundle in the second bedroom. The kitchen has a microwave and a free-standing oven with a separate grill and offers access to the communal garden area. There's a TV and DVD player in the tiled, open-plan living area and a top-loader washing machine in the laundry.



BLUEYS BEACH VILLA MANYANA 28
28/13 BANKSIA STREET, BLUEYS BEACH



Conveniently located on the ground floor, this villa has a tropical vibe, with a queen-size bed in the master bedroom and a double bed and bunk bed in the second bedroom. The open-plan living and dining area has a flatscreen TV, DVD player and an iPad dock. The kitchen has a ceramic electric stovetop, microwave, grill, convection oven and a dishwasher.



BLUEYS BEACH VILLA MANYANA BOOMERANG POINT APARTMENT
29/13 BANKSIA STREET, BLUEYS BEACH



This stylish apartment offers a sleek, modern kitchen and bath, perfect for a tranquil beach getaway. The kitchen features top-notch appliances, while the unit is furnished with chic timber flooring. Entertainment options include a large flat-screen TV with a DVD player, an iPod dock, and an iPhone charger. Additionally, it includes a front-loading washing machine and both front and rear balconies, perfect for outdoor gatherings, complete with a Weber BBQ for added convenience. sounds of the surf.



VISIONS 2
2/15 HEADLAND ROAD, BLUEYS BEACH

Designed specifically to accommodate large families or groups, this stylish coastal residence fuses contemporary living with family-friendly comfort. At the front of the property is a king-size bedroom boasting ocean views and an ensuite with a deep soak tub. It's been envisioned as a parent's retreat, with Japanese-inspired Shoji doors that can be slid closed at the end of the day. There are two more queen-size bedrooms and a kids' bedroom with two single beds, all of which can be temperature-controlled using the ducted air-conditioning system. The chef's kitchen has Caesarstone benchtops,



stainless steel appliances and a breakfast bar, and opens out onto an open-plan living area complete with a flatscreen TV, DVD and CD players. The large main bathroom features a bath, shower and toilet, while the laundry is conveniently equipped with a washing machine and a dryer. The deck boasts magnificent views of Boomerang Beach, as well as offering direct access to your private pool and waterfall spa. For peace of mind, you can park safely in the automatic-door garage.

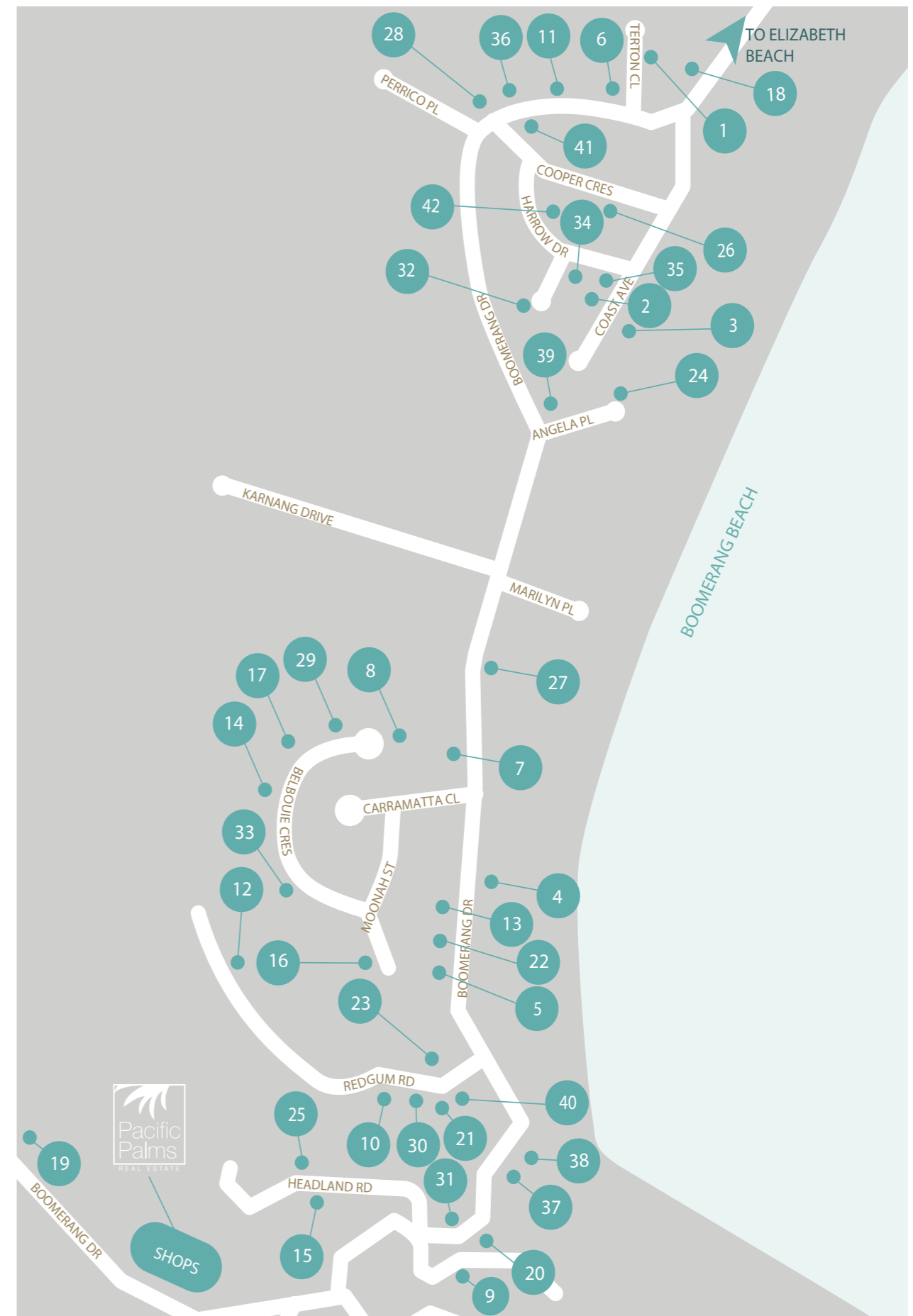


Boomerang Beach

Defined by its sweeping arc of golden sand – hence the name Boomerang Beach – this is the jewel in the Pacific Palms surfing crown. Boomerang Beach regularly plays host to major surfing competitions, with its headlands offering protection from the prevailing winds and rock ledge formations helping create superb surf conditions. Beachcombers can spot playful dolphins and migrating whales from its shores, while anglers will relish opportunities for both beach and rock fishing. Promising a spectacular sunrise and ideal swimming conditions, you'll enjoy the year-round sunshine on offer at Boomerang Beach.

MAP INDEX

1	3 MELALEUCA	25	NOR EASTER
2	5 ON COAST	26	OCEAN BREEZE ON COOPER
3	8 ON COAST	27	OCEANSIDE APARTMENTS
4	124 BOOMERANG DRIVE	28	OUTRIGGER
5	ACACIA	29	POINT BREAK
6	ANGLERS COVE	30	SANDS
7	BARRELS AT BOOMERANG	31	SEAGULL 1
8	BEACH BREAK	32	SEA SOULS
9	BELVEDERE	33	SHORE BEATS WORK
10	BOOM 1, BOOM 2, BOOM 8	34	SPINNAKER 1
11	BOOMERANG BLISS	35	SPINNAKER 2
12	BOOMERANG HIDEAWAY	36	SUNDOWNDER
13	BREEZA ON BOOM	37	TAWARRI
14	CLARKE HOUSE	38	THE BEACH HOUSE
15	EUREKA	39	THE POLE HOUSE
16	FRANGIPANI	40	THE REEF
17	HIBISCUS	41	TWIN PEAKS 1 & 2
18	JUDDY'S @ BOOMERANG	42	WAVERIDER 1 & 2
19	KOOKABURRA RETREAT		
20	LAAQUA		
21	LUNA SEA		
22	MAGIC BEACH HOUSE		
23	MOBY'S RETREAT		
24	NINGALOO		





3 MELALEUCA

3/4 TERTON CLOSE, BOOMERANG BEACH

Tailored to accommodate families of all ages, this residence presents an ideal haven. Its proximity to natural wonders ensures a blend of tranquility and adventure, allowing residents to immerse themselves in the captivating surroundings. This villa is beautifully refurbished, and boasts three bedrooms and two bathrooms. The spacious lounge/dining area seamlessly connects to a meticulously maintained courtyard, offering an

inviting space for delightful afternoon barbecues with loved ones. Positioned with a north-facing orientation, the outdoor area adjoins the breathtaking Booti Booti National Park, mere meters away from the serene north Boomerang Beach. A brief stroll leads to Elizabeth Beach, monitored by Surf Life Saving Club patrols during summer holidays and weekends, while the secluded Shelly Beach also beckons nearby.



8 ON COAST

8 COAST AVENUE, BOOMERANG BEACH

Swaddled in the tranquil ambiance of 8 Coast Ave, this seductive sanctuary comfortably welcomes up to 8 guests with upscale and sumptuous amenities. Featuring four luxuriously comfortable bedrooms that hold the key to your restful nights. Each room is elegantly furnished, boasting a combination of chic coastal charm accentuated with modern comfort. The master suite commands a superb view of the ocean, creating an inviting aura that compliments its glorious mornings and calming nights. While the remaining cozy rooms are thoughtfully detailed to ensure a dreamy retreat after a day of beach frolic. In the realm of amenities,

the house boasts three spotless and modern bathrooms complete with complimentary amenities. The fully-equipped kitchen inspires delicious creativity with modern appliances. The dining area, splendidly accentuated by the outdoor view, will enhance your homemade meals. Outside, the deck doubles as a haven, with an outdoor shower, a barbecue grill for those chill evenings, and inviting outdoor furniture that sets the perfect scene overlooking the pristine beachfront. The backyard garden bids serenity while indoors; the heated grips of the wood heater and fireplace promise cozy snuggle-up moments under the breathtaking ocean view.



5 ON COAST

5 COAST AVENUE, BOOMERANG BEACH

Sit back, kick off your shoes and enjoy coastal living at its best! Stunning architect designed four-bedroom residence in dress circle location adjacent to the sparkling shores of Boomerang Beach. Open plan living & entertainment area with combustion fire and vogue décor opening to large deck with sunlounge, gas B B Q and outdoor setting. Ceiling fans in living room and 3 bedrooms. Full linen provided - just bring your beach towels! Master bedroom with king bed and air conditioning, ceiling fan, built in robe, opens to private

deck. Second bedroom with king bed, ensuite, built in robe and garden outlook. Third bedroom with two single beds. Fourth bedroom on mezzanine level with 2 single beds. Well equipped kitchen with dishwasher, fridge, microwave and stainless-steel appliances. Three well-appointed 3 bathrooms with showers. Additional facilities include SmartTV, DVD, Wi-Fi, laundry with washing machine, Fridge and dryer, additional toilet and basin, undercover parking and outdoor shower.



124 BOOMERANG DRIVE

124 BOOMERANG DRIVE, BOOMERANG BEACH

With direct beach access from the backyard, this family-friendly home is a surfer's dream. Return home at the end of the day for a game of pool in the rumpus room, or curl up to take in the spectacular view from the living room. The house has four rooms with two single beds in each and three bathrooms, one with a bath. There's also a fully equipped kitchen with a dishwasher and microwave, while

the living room has a flatscreen TV, DVD and CD players and a combustion fireplace to keep you warm during the winter months. There's also laundry facilities and an extra shower, as well as an outdoor shower and a garden area with a gas barbecue. Off-street parking is also available. No pets allowed.





ACACIA

89 BOOMERANG DRIVE, BOOMERANG BEACH

A secluded, beautifully designed courtyard awaits, complete with an inviting outdoor setting and a convenient gas BBQ, ideal for leisurely gatherings. Bedroom 1 and 2 have a queen size bed and is large enough to accommodate the child's portacot provided. Bedroom 3 features two cozy single beds for added flexibility. The generously sized bathroom is equipped with a luxurious full bathtub, a refreshing shower, and a vanity, complemented by a separate toilet for convenience. The well-



appointed kitchen is equipped with essential amenities such as a microwave, oven, and cooktop, ensuring a seamless culinary experience. In the living area, entertainment takes center stage with a sizable wall-mounted TV and an integrated DVD player. The sound system, equipped with Bluetooth compatibility, enhances the audio experience, providing an immersive ambiance.



BARRELS AT BOOMERANG

107 BOOMERANG DRIVE, BOOMERANG BEACH

Enjoy a well deserved break, in this spacious beach vibe holiday home, directly across the road from direct beach access to Boomerang Beach. You'll check out the morning surf with coffee in hand, and only ever need a board and a beach towel because you're meters away from the sand and waves. This inviting, sunlit property embodies comfort and relaxation, nestled on a generous expanse of land tailored to accommodate families or groups of friends. The spaciousness of this holiday home creates an ideal setting



for unwinding amidst its bright and airy interior. The home has 3 bedrooms and 2 Bathrooms, the main bathroom with separate shower & bathtub. There is a laundry complete with washing machine & dryer. Whether it's lounging indoors or stepping out onto the sprawling grounds, this holiday retreat offers the quintessential getaway, where tranquility meets the allure of the seaside, fostering cherished moments and lasting memories for all who stay.



ANGLERS COVE

1 TERTON CLOSE, BOOMERANG BEACH

Experience the airy elegance of our Hampton-style vacation retreat, mere steps away from Boomerang Beach. Immerse yourself in comfort with complimentary full linen provided—pack your beach towels and leave the rest to us. Boasting four generously sized bedrooms, our residence offers a serene escape. Ascend to the upper level to discover the primary bedroom, complete with an ensuite bathroom and a private balcony—a tranquil haven to unwind and soak in the coastal ambiance. The ground floor hosts the additional bedrooms,



a well-appointed main bathroom, a fully equipped kitchen, and inviting living spaces seamlessly connected to the lush outdoor garden. Indulge in culinary delights while lounging on the verandah, savoring the al fresco experience. For ultimate relaxation, a spacious corner bathtub awaits, inviting you to melt away the burdens of daily life. This haven promises a harmonious blend of coastal charm and modern comfort, creating an idyllic setting for your vacation by the beach.



BEACH BREAK

55 BELBOURIE CRESCENT, BOOMERANG BEACH

This three-bedroom property, located at the end of a quiet cul-de-sac, is ideal for families. Kids can ride their bikes and scooters or swim in the pool, all while being just a short stroll from Boomerang Beach. It has two queen-size bedrooms, and a third room with a single bed and triple bunk bed (single over double), making it perfect for two families holidaying together. The bathroom has a shower over the bath and a separate toilet, with an additional shower and toilet upstairs.



Polished floors are a feature of the living/dining area, while the open-plan designer kitchen has modern appliances and stone benchtops. It opens out onto a covered deck with a gas barbecue. You'll find a compact laundry with a washing machine and a dryer downstairs, plus a sunroom overlooking the pool patio. A double automatic garage with room for the boat completes the package. Small pets can stay by application only.



BELVEDERE

126 BOOMERANG DRIVE, BOOMERANG BEACH

Situated along Headland Road, with stunning views across Blueys Beach. Its sprawling grounds feature an expansive lawn, ideal for outdoor gatherings, complemented by a delightful enclosed sunroom perfect for entertaining loved ones. The two front bedrooms offer panoramic ocean views, inviting in refreshing breezes through glass sliding doors that open onto the vast lawn. The interior delights with an airy open-plan layout merging a well-equipped kitchen, dining area, and lounge complete with WiFi and provided linens (just remember to bring your beach towels!). Enjoy culinary

escapades with a fully stocked kitchen hosting a dishwasher and a Weber BBQ nestled under the vibrant Bougainvillea. The accommodation comprises three bathrooms: an ensuite accompanying the main bedroom, a second one equipped with a shower and toilet, and the main bathroom featuring a luxurious bathtub. Additionally, amenities include a single garage, off-street parking, and a combined laundry with a washer and dryer. Experience a stay amid stunning vistas that promise an unforgettable retreat!



BOOM 2

2/11 REDGUM ROAD, BOOMERANG BEACH

Set across two levels, this architecturally-designed, three-bedroom townhouse is just a short stroll from the golden sands of Boomerang Beach. It is bathed in light thanks to its north-facing position and offers access to a 15-metre swimming pool and a half tennis court. On the upper level of Boom 2 are its three bedrooms, which include a master bedroom with a king-size bed and a private balcony where you can enjoy your morning coffee. There's also a queen bedroom and a dedicated kids' room with two bunk beds, a smart TV and a PlayStation. On the ground floor is a modern kitchen



with all the cooking appliances you need, plus a Nespresso coffee machine with complimentary pods. The comfortable living room features a 65-inch smart TV with complimentary streaming services while the laundry comes complete with an integrated washing machine and dryer. When you return from the beach, you can take advantage of the heated outdoor shower to rinse off, and store your gear using the surfboard and fishing rod racks. In the poolside courtyard is a Weber barbecue and outdoor seating. Strictly no smoking and no pets.



BOOM 1

1/11 REDGUM ROAD, BOOMERANG BEACH

Nestled at the end of the complex, which has a pool, a tennis court and Wi-Fi, this sophisticated townhouse has stylish interiors and well-appointed bedrooms. The master bedroom has a built-in robe and TV, access to a private balcony and an ensuite with a shower and a toilet. The second bedroom has a queen-size bed while the third has a queen-size bed and an extra single bed, as well as a built-in robe. All three

bedrooms have ceiling fans. The main bathroom has a shower and corner bath while the laundry has a washing machine and a dryer, plus a separate toilet. An open-plan living/dining area connects with the fully-equipped kitchen, which has an electric oven and stove, a dishwasher and a Nespresso coffee machine. A private courtyard at the rear of the property is the perfect setting for barbecues.



BOOM 8

8/11 REDGUM ROAD, BOOMERANG BEACH

This stylish townhouse is perfect for two families or couples. It has a king bedroom with a ceiling fan and ensuite, a queen bedroom with a ceiling fan and a double bedroom with an extra bunk bed. In addition to the bathroom with shower and corner bath, there's a laundry with a washing machine and a dryer and underground parking for two cars.



The fully-equipped kitchen connects to an open-plan living/dining area and an alfresco deck with a gas barbecue. The open-plan living area has a TV and DVD and CD players. There's also a deck with a gas barbecue, a secure grassy yard where kids can play and an enclosed outdoor shower. The complex has a pool, a half tennis court and Wi-Fi.





BOOMERANG BLISS

2/13 BOOMERANG DRIVE, BOOMERANG BEACH

Modern, light-filled living awaits in this two-storey townhouse. It has a queen-size bedroom and a room with two triple bunk beds upstairs, while the lower level has another queen-size bedroom and the main bathroom with shower, toilet and corner bath. All bedrooms have ceiling fans. It's also downstairs that you'll find the stylish kitchen with its island



3 2 8

bench and modern appliances, which connects to the open-plan living and dining area. It also has a wood heater, plus a TV, DVD and CD players, a large patio with a gas barbecue and outdoor setting for eight, plus an enclosed yard. Pets by application only.



BREEZA ON BOOM

133 BOOMERANG DRIVE, BOOMERANG BEACH

This incredibly expansive single-level residence sits just a stone's throw away from the picturesque Boomerang Beach. Its generous space and layout offer not one but two sizable living zones, catering perfectly to families with little ones, thanks to its fully enclosed yard. During the colder seasons, relish the cozy ambience provided by the wood fire. The well-appointed gourmet kitchen is a haven for culinary enthusiasts



3 3.5 7

within the family, while every bedroom benefits from the comfort of ceiling fans. Step outside to discover an inviting outdoor entertainment space, complete with a barbecue setup and outdoor dining arrangement. For added convenience, there's a spacious double garage at your disposal. With its ample space and family-friendly amenities, this residence offers an ideal retreat for creating lasting memories.



BOOMERANG HIDEAWAY – A TRANQUIL ACREAGE

50 REDGUM ROAD, BOOMERANG BEACH

Coast meets country at this sprawling acreage, which is just a short drive from Boomerang Beach. Its large living areas and large lawn offer plenty of space for large families or two families holidaying together. As well as the master bedroom with a 'his and hers' walk-in robe and ensuite, there is a queen-size bedroom, a double bedroom and a fourth bedroom with three single beds. The main bathroom has a shower and spa bath while the laundry has a top-loader washing machine



4 2.5 9

and a dryer. The spacious kitchen, which has an island bench and walk-in pantry, connects to an open-plan living/dining area with a wood heater. Step directly from here into the gardens where you'll find a gazebo, an outdoor shower and a gas barbecue. There's also a family room with a TV and DVD player, as well as a double garage. Small dogs are welcome, but the garden is not fully fenced.



CLARKE HOUSE

44 BELBOURIE CRESCENT, BOOMERANG BEACH

Nestled in tranquil gardens, this single-storey holiday home is just four minutes' stroll from Boomerang Beach. It has two queen-size bedrooms (one with an ensuite) and a twin-bed room, plus a fourth room with a bunk bed and desk. The main bathroom has a walk-in shower, bath and toilet while the laundry has a washing machine and a dryer. Multiple living areas mean that everyone can spread out, making this property ideal for a large family or two families



4 2 8

holidaying together. There's an LCDTV and a DVD player with 5.1 surround sound in the main lounge area, as well as a selection of DVDs, CDs, books, magazines and games. Extra seating areas bathed in light are perfect for reading. You can cook up a storm in the fully-equipped kitchen or on the gas barbecue, then dine either inside or beneath the garden arbour. Wi-Fi is available throughout the property and there is an automatic garage that can accommodate two cars.



EUREKA

30 HEADLAND ROAD, BOOMERANG BEACH

Enjoy breathtaking vistas of the ocean and Blueys Beach extending all the way to the headland and beyond! This exclusive, architect-designed beach house on Headland Road offers an unparalleled view. Located within a short stroll of both Blueys and Boomerang Beach, as well as nearby shops and cafes, convenience meets luxury. The open-plan living area boasts a fully equipped kitchen, ideal for entertaining guests. Stay comfortable year-round with reverse cycle air conditioning and cozy up by the Jet Masterfire fireplace on cooler nights (complete with a bag of wood supplied in



 4  3.5  10

Winter). The rear deck, equipped with a BBQ, allows you to savor the scenery. Wake up to this stunning panorama from the master bedroom, featuring its own ensuite. Downstairs, two additional bedrooms, a sitting room, and a bathroom await. A double garage offers parking convenience, while full linen is provided—just pack your beach towels. For added privacy, a separate detached bedroom with an ensuite is accessible from the back deck, making it perfect for a couple seeking a serene retreat.



HIBISCUS

58 BELBOURIE CRESCENT, BOOMERANG BEACH

This contemporary, architecturally designed beach house is located in a quiet cul-de-sac, just a short stroll from Boomerang Beach. It overlooks a 400-square-metre backyard with a grassy lawn, lush gardens and a large saltwater pool. Upstairs are two high-ceilinged queen-size bedrooms and another with twin single beds, plus a bathroom, while downstairs is another queen-size bedroom and a two-way bathroom. The open-plan



 4  2  8

living/dining area opens out onto the sun-drenched pool deck with its gas barbecue. The living area connects seamlessly with the stylish kitchen, which is fitted out with top-of-the-range appliances and a two-seater breakfast bar. The sunken lounge room is the perfect place to retreat at the end of the day, with a TV, DVD and CD player. For peace of mind, there's a lock-up garage.



FRANGIPANI

22 BELBOURIE CRESENT, BOOMERANG BEACH

This exquisite three-bedroom family residence is nestled amidst beautifully designed gardens and sits a mere 200 meters away from the serene Boomerang Beach. Enclosed within its own private yard, this home offers an ideal haven for your family pet while boasting a north-facing orientation. Step inside to discover a living area that seamlessly extends onto a deck adorned with an outdoor setting and a convenient gas BBQ, perfect for entertaining or simply relishing the coastal ambiance. With a commitment to pet friendliness, the property ensures a welcoming space for your furry



 3  2  7 

companions. The proximity to the beach adds an extra layer of allure, making it effortless to relish the sun-kissed shores and salty breezes. Additionally, the covered outdoor space amplifies the allure of al fresco living while the inclusion of ceiling fans in the bedrooms ensures a comfortable and restful retreat. This charming abode offers a harmonious blend of tranquility, functionality, and proximity to nature's beauty, presenting an idyllic setting for creating lasting family memories amidst the splendor of coastal living.



JUDDY'S @ BOOMERANG

1 BOOMERANG DRIVE, BOOMERANG BEACH

Located at the northern end of Boomerang Beach, this creatively designed holiday home is unique in every sense of the word. It's set across three levels, with five bedrooms that can accommodate up to 10 people. The property's centrepiece is a large saltwater pool featuring a sculptural wave and a swim-up bar, which is surrounded by lush gardens with a gazebo, outdoor shower and daybed. As well as three queen-size bedrooms (one with a deluxe ensuite), there are two



 5  3  10

rooms with twin singles on the ground and first floors. The second-floor kitchen has modern appliances and an island bench, while there's an additional kitchenette on the ground floor. Multiple living and lounge areas are found on all three levels, including a large rumpus room and a 10-seater dining space. A laundry with front-loader washing machine and a dryer is on the ground floor, as well as a powder room and a double garage with a table tennis table.



KOOKABURRA RETREAT
258 BOOMERANG DRIVE, BOOMERANG BEACH

Discover the captivating allure of Kookaburra Retreat, a stunning holiday home nestled in the heart of Blueys Beach, NSW. This exemplary secluded haven can comfortably accommodate up to 12 lucky guests within its 5 luxurious bedrooms, each offering a unique retreat where comfort meets style, a harmonious marriage designed with restful nights in mind. Engage in an immersive experience offered by Kookaburra Retreat's world-class amenities that effortlessly



 5  3  12

blend convenience with leisure. The fully equipped kitchen stands ready for all your culinary adventures while the 2 smart TVs promises unparalleled entertainment options. Enjoy a barbecue under the stars in the covered outdoor area or simply chill out with some red wine in front of the open log fire, there is also an outdoor firepit for those chilly evenings where you can sit and enjoy the stars, there is also a pool table and dart board in the garage for more entertainment.



LUNAR SEA
4/9 RED GUM ROAD, BOOMERANG BEACH

Indulge in the refreshing ocean breeze and behold the breathtaking panoramic views of the sea from this chic, luminous townhouse nestled in the heart of Boomerang Beach. Revel in the mere stroll to the beach, perfect for families seeking a tranquil getaway. Delight in the opportunity for whale and dolphin watching, adding an enchanting touch to your coastal stay. Conveniently situated within walking distance of local cafes, restaurants, and shops, this location ensures easy access to all amenities. Unwind on the covered



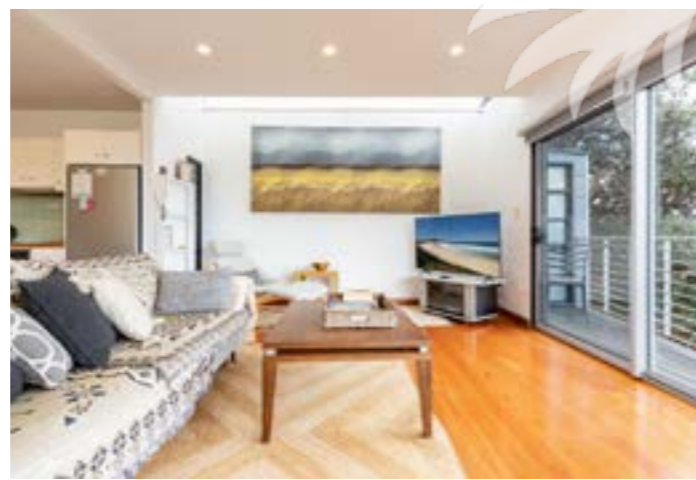
 3  2  6

balcony equipped with a barbecue, where you can soak in the scenery and savor leisurely moments. Further enhancing your experience is an outdoor shower for refreshing dips after beach adventures, coupled with off-street parking and garage access, ensuring hassle-free arrivals and departures. Embrace the tranquility and serenity of this coastal haven, letting the mesmerizing views and amenities create lasting memories of relaxation and joy.



LAAQUA
9 HEADLAND ROAD, BOOMERANG BEACH

Perched on a headland between Boomerang and Blueys beaches, this stylish residence offers stunning views across the water and surrounding hinterland. There are two bedrooms downstairs that include a queen bedroom with a private balcony and another room with two single beds that can be combined to form a king. The main bathroom, with shower, toilet, front-loader washing machine and dryer, is also located downstairs, while an additional powder room is



 2  1.5  4

found upstairs. The open-plan living/dining area has an open fireplace, as well as a flatscreenTV, DVD player and iPod dock. The surf-inspired kitchen is fully equipped with a gas stove, electric oven and a dishwasher, as well as a microwave and Breville coffee machine. At the end of the day, you can enjoy sundowners on the rooftop deck, which has sun loungers, an outdoor setting and a Weber gas barbecue. Off-street parking is available for two cars and linen is supplied.



MAGIC BEACH HOUSE
1/137 BOOMERANG DRIVE, BOOMERANG BEACH

Magic Beach House comfortably accommodates up to six adults or up to four adults and five children. There are two rooms with queen beds and one bedroom with two sets of bunk beds that sleep up to four or five the lower bed on one of the bunks is a double. We like to be comfortable when we are here so Magic Beach House has great beds the queens are pillow-tops. The kitchen is well-stocked with all the appliances and utensils



 3  1  9

you need other people who have stayed here particularly love the very large second fridge. Magic Beach House has a large open plan living area with a big TV and bean bags, BYO popcorn but Wi-Fi and Netflix included. There is reverse cycle air conditioning to keep you cool or warm. After your day at the beach, you can have a hot or cool outdoor shower with great water pressure one of life's simple pleasures we think.



MOBY'S BEACHSIDE RETREAT

Nestled in lush gardens, Moby's is an idyllic holiday resort offering one-, two- and three-bedroom beach houses that are ideal for families. Architecturally designed, they feature large glass windows that allow the natural light to stream in. The resort's facilities include a lagoon-style pool and heated spa, plus tennis courts and an on-site restaurant, Sips@Moby's, which is open Thursday to Sunday. Strictly no pets and full linen is supplied.



MOBY'S BEACHSIDE RETREAT 8 8/4 RED GUM ROAD, BOOMERANG BEACH



This two-bedroom villa, located just 50 metres from Boomerang Beach, has a master bedroom with a queen-size bed and ensuite, plus a second bedroom that can either be configured as a queen or with two single beds. Adjacent is the main bathroom while there's also an outdoor shower for rinsing off after the beach. You can cook in the well-equipped kitchenette or take advantage of the barbecue on the deck, then relax in the beautifully appointed living room, which has a flatscreen TV, DVD and CD player.



MOBY'S BEACHSIDE RETREAT 29 29/4 RED GUM ROAD, BOOMERANG BEACH



This home harmoniously combines comfort, style, and practicality for an unforgettable stay. Upstairs, this elegantly adorned residence boasts a luxurious queen-size bedroom paired with an en suite bath. On the lower level, discover two bedrooms featuring twin single beds along with a well-appointed main bathroom. The heart of the home showcases a fully equipped kitchen seamlessly blending into an expansive open-plan living and dining space, fostering an inviting atmosphere for relaxation and gatherings. Step outside onto the charming outdoor deck, complete with a convenient gas barbecue, offering a perfect spot for alfresco dining or lounging in the fresh air.



MOBY'S BEACHSIDE RETREAT 35 35/4 RED GUM ROAD, BOOMERANG BEACH



Great for both a weekend getaway and a holiday escape! Stylish Architect designed beach house located within the Mobys Resort at Boomerang Beach - providing stylish comfort and the convenience of being close to everything! Walk to the beach, pool, tennis courts, bar, and restaurant! Nestled in Mobys Resort you have access to all the facilities, relax around the pool and spa, have a game of tennis, or work out in the Gym. Grab a meal or cocktail at the Restaurant and Bar located at the front of the Resort, next to the pool.



MOBY'S BEACHSIDE RETREAT 11 11/4 RED GUM ROAD, BOOMERANG BEACH



Ideal for a family of four, this architecturally-designed two-bedroom beach house has a queen bedroom with an ensuite and a double room that can be configured with two single beds. In addition to the main bathroom and laundry with washing machine and a dryer, there's a fully equipped kitchen with a convection oven and ALDI pod coffee machine. Relax in the open-plan living/dining area or on the outdoor deck.



MOBY'S BEACHSIDE RETREAT 25 25/4 RED GUM ROAD, BOOMERANG BEACH



This architect-designed two-bedroom holiday house is close to everything Boomerang Beach has to offer. Contemporarily styled with timber floors, large rooms and alfresco decks. In addition to a master bedroom with a king-size bed and an ensuite bathroom, there is a second bedroom that can be configured with two singles or a queen-size bed. The fully-equipped kitchen comes complete with a dishwasher, small bench oven, stovetop cooker and microwave and connects to the outdoor dining and barbecue deck.



NINGALOO

3 ANGELA PLACE, BOOMERANG BEACH

Offering views across Boomerang Beach, this renovated property has been designed with a breezy, coastal aesthetic. In addition to the master bedroom, there's another queen bedroom and two rooms with twin singles. There are two bathrooms with showers (including one with a top-loader washing machine and a dryer), plus a separate toilet. With a large island bench and modern appliances, the light and



airy kitchen makes cooking a pleasure and comes with a Nespresso pod coffee machine. The open-plan living area has a flatscreen TV and a DVD player and opens out onto a large deck with ocean views. On the side deck is a hooded gas barbecue while another deck at the back of the property offers bushland views and an outdoor shower. This deck is accessed from the relaxed family room, which has a TV and DVD player.



NOR EASTER

23 HEADLAND ROAD, BOOMERANG BEACH

Light and bright, with inviting sun drenched alfresco areas, vaulted ceiling which creates a sense of spaciousness.. you'll feel instantly at home at Nor Easter. Boasting a modern kitchen with stainless steel appliances, and enticing ocean views perfect for whale watching. The property sleep 8 across 4 bedrooms and has two bathrooms, each with a bathtub and shower. Take your choice of two separate living areas, each

with TV and DVD player. There is a full laundry with washer and dryer, as well as off street parking. Two decks with sweeping ocean views are the perfect place to relax and unwind, or enjoy a BBQ with friends and family. Nestled amongst the tree tops, Nor Easter is a private and tranquil abode which ensures a calming ambience to any beach getaway.



OCEAN BREEZE ON COOPER

8 COOPER CRESENT, BOOMERANG BEACH

You will find all your luxury creature comforts from home in this idyllic spacious beach getaway - offering WIFI, coffee facilities and fresh linen - a perfect stay for couples, families, or a group of mature friends. Close to local National Park walks, an array of swim and surf beaches, shops and cafes for your morning coffee or surfing weekend getaway. Ideal central location for attending wedding venues in the area also. Living areas upstairs and downstairs, main bathroom downstairs with bath tub, bathroom upstairs with shower,

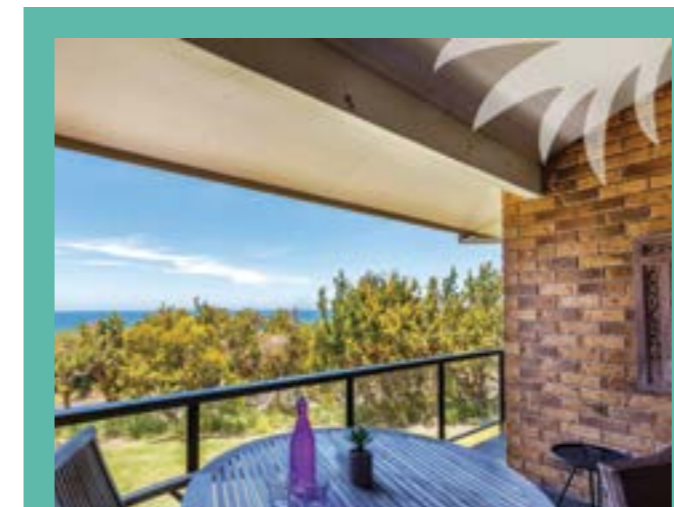
ensuite with the main bedroom upstairs, large fully equipped kitchen with lots of bench space and lovely dining area. Front verandah with comfy outdoor setting, and a large Bali hut downstairs where you can enjoy the gardens, BBQ and entertain with family and friends. Outdoor shower to wash off the golden sands of Boomerang Beach, just 5mins up the road (Northern end of Boomerang Beach or you can go through Coast Avenue directly to the beach).



Join our Mailing List

Subscribe for the latest property updates and holiday offers!

To subscribe visit pacificpalmsholidays.com.au



OCEANSIDE APARTMENTS

Positioned directly overlooking the sands of Boomerang Beach, these comfortable apartments offer everything you need for a comfortable stay. They each have two bedrooms and can accommodate between four and six people, with fully-equipped kitchens, laundries and undercover parking available. The private balconies are the ideal place to watch the waves roll in or spot whales and dolphins. Strictly no pets. BYO linen - pillows, blankets and doonas are supplied (linen hire is available on request).



OCEANSIDE 4 - SEA BLISS

4/90-100 BOOMERANG DRIVE, BOOMERANG BEACH



Offering a queen-size bedroom and another with two bunk beds, this well-appointed apartment has an open-plan living and dining area with a flatscreen TV, as well as a fully-equipped kitchen with an electric stove and oven, a microwave and a dishwasher. The combined bathroom-laundry has a shower, washing machine and dryer, with another shower outside. In addition to the beachfront balcony with gas barbecue, there's a second balcony offering bushland views.



OCEANSIDE 17 – BREEZES
17/90-100 BOOMERANG DRIVE,
BOOMERANG BEACH

 2  1  5

This bright and airy apartment has a queen-size bedroom with access to the patio and garden, plus a double room with an extra single bed. The renovated bathroom has a shower over the bath, plus a front-loader washing machine and a dryer. The fully-equipped kitchen connects to a light-filled dining area and modern living space that has a wall-mounted TV and DVD player. This opens out onto the beachfront garden and balcony offering bushland views.



OUTRIGGER

25 BOOMERANG DRIVE, BOOMERANG BEACH

 4  2  10

White, bright and with a contemporary coastal feel - spacious kitchen and family room leading out to the covered deck and outdoor spaces - surrounded by lush Palm trees with that tropical touch by the ocean! Lazy evening barbeques, a couple of drinks or just a quiet area to sit back and read a book will have you unwinding in an instant. The kitchen is fully equipped with dishwasher, ceiling fans in all bedrooms, the main bathroom has a large corner spa bath plus separate shower and there is also an outdoor shower to wash the golden sands off from the



beach. Outrigger is an architecturally designed air conditioned 3 bedroom beach house offering accommodation for up to 8 people in the main bedroom with queen bed, second bedroom with a queen bed, third bedroom with a double bed and 2 single beds, or up to 10 people with the fold out sofa in the family room downstairs. Two separate living areas – both with Smart televisions, leading out to the entertaining decks. You need to bring your own linen and towels, or you are welcome to hire linen packs from us.



OCEANSIDE 18

18/90 BOOMERANG DRIVE, BOOMERANG BEACH

 2  1  4

Perfectly designed for a family of four, this comfortable apartment has a queen-size bedroom with access to the balcony and a second bedroom with twin single beds, plus a combined bathroom-laundry with a shower, washing machine and a dryer. The open-plan living and dining area connects with a fully-equipped kitchen and a private balcony where you can cook on the gas barbecue.

OCEANSIDE 20 – SAPPHIRE

20/90-100 BOOMERANG DRIVE,
BOOMERANG BEACH

 2  1  6

Offering both beach and bushland views, this sunny holiday apartment can accommodate up to six people in two bedrooms. In addition to the master bedroom, there's a double bedroom with an additional bunk bed. The combined bathroom-laundry has a shower, washing machine and a dryer while the kitchen is fully-equipped with an electric oven and stove, dishwasher and microwave. Relax at the end of the day in the open-plan living area, which has a TV, DVD and CD player, or enjoy a barbecue on the beachfront balcony.



POINT BREAK

2/64 BELBOURIE CRESENT, BOOMERANG BEACH

 3  2  6

Experience the allure of a modern beachside retreat, just moments away from the pristine waters of Boomerang Beach. This contemporary beach house boasts proximity to the waves, mere minutes on foot from the shoreline. Step inside to discover a haven designed for relaxation and functionality. The accommodation features a reverse cycle air conditioner, ensuring climate control throughout your stay. Embrace the culinary delights of a modern, fully equipped kitchen complete with a microwave and dishwasher. This seamlessly



connects to an informal family and dining area where a TV with WiFi awaits, blending entertainment with connectivity. Effortless convenience continues with a laundry equipped with a washing machine and dryer. Step outside onto the rear deck area, where a gas BBQ and outdoor setting invite leisurely moments amidst the coastal ambiance. Wash off the sand and salt in the refreshing outdoor shower, adding a touch of beachside indulgence.



SANDS

3/9 REDGUM ROAD, BOOMERANG BEACH

Perched atop a headland, this two-storey holiday home offers panoramic views towards Boomerang Beach from its multiple balconies. It's been designed to accommodate up to six people, with contemporary interiors that are light, bright and spacious. Upstairs is the master bedroom with an ensuite that has access to a private balcony, while downstairs are two more bedrooms – one with a queen-size bed and the other with two bunk beds. Also downstairs is the main bathroom with a



shower, bath and separate toilet, as well as the laundry with a top-loader washing machine and a dryer. You can cook up a storm in the fully-equipped kitchen, which has an electric oven and induction stovetop, a dishwasher and a coffee machine, or take advantage of the gas barbecue on the deck. This can be accessed from the open-plan living/dining area, which has a plasma TV, DVD player and Bluetooth-enabled speakers. Parking for two cars is available in the double garage.



SEA SOULS

4 KULA CLOSE, BOOMERANG BEACH

Whether you're seeking relaxation, adventure, or a bit of both, our two-storey haven above Boomerang Beach is the perfect escape. Book your stay now and immerse yourself in the coastal magic that awaits you. Elevated above the trees, our holiday home exudes elegance with its modern décor and thoughtful design. From the moment you step inside, you'll be greeted by a seamless blend of contemporary style and coastal charm. A short walk will lead you to the sun-kissed shores of Boomerang Beach, inviting you to indulge in the rhythmic sounds of the waves and the pristine sands just



moments from your doorstep. With four bedrooms and two bathrooms, there's ample space for families or groups of friends. Immerse yourself in the coastal lifestyle with our large deck boasting tree top ocean views. Perfect for morning coffees, lazy afternoons, or starlit gatherings, this outdoor space is a sanctuary for relaxation. Refreshing Outdoor Shower: Indulge in the luxury of our additional outdoor private shower, where you can wash away the salt and sand while surrounded by the soothing sounds of nature.



SEAGULL 1

1-167 BOOMERANG DRIVE, BOOMERANG BEACH

For the perfect beach home away from home, look no further than Seagull 1. Situated just a brief stroll away from Boomerang Beach, renowned for its exceptional waves in the Pacific Palms area, this well-equipped residence offers proximity to the surf and shore, inviting you to revel in the charms of this delightful holiday village. Returning from your beach adventures is effortless, knowing that relaxation awaits within these splendid and accommodating surroundings. The modern kitchen, in vogue with the latest trends, seamlessly



connects with the expansive open-plan living areas, extending onto the north-facing sheltered deck overlooking the ocean. This space serves as an idyllic backdrop for leisurely summer breakfasts or delightful al fresco dinners shared with loved ones, all while serenaded by the soothing melody of the waves crashing nearby. Whether relishing lazy mornings or embracing convivial evenings, this residence encapsulates the quintessential beach lifestyle for unforgettable moments with family and friends.



SHORE BEATS WORK

34 BELBOURIE CRESENT, BOOMERANG BEACH

This delightful beachside retreat, conveniently situated near Boomerang Beach, offers an idyllic escape for relaxation and enjoyment. The generously spacious two-level vacation abode boasts a fully equipped kitchen, Smart TV, Blu-ray player, WiFi access, air conditioning, and a pet-friendly policy. Embracing both convenience and comfort, the property features a fully enclosed grassy yard ideal for children and furry companions. The bedrooms are adorned with ceiling



fans, and both the upstairs and downstairs bathrooms include a relaxing bathtub. The garage houses a variety of recreational equipment such as paddleboards, surfboards, and children's kayaks (please bring your own life jackets). Additionally, a table tennis table is available, ensuring endless entertainment possibilities. This haven is perfectly tailored for a memorable and fun-filled beach holiday, catering to families or mature groups of friends seeking a rejuvenating seaside experience.





SPINNAKER 1

1/1 KULA CLOSE, BOOMERANG BEACH

This charming and luminous beach residence boasts three bedrooms and two bathrooms, nestled within an incredibly short walking distance of Boomerang Beach, merely around 150 meters away. The property is surrounded by native landscaped gardens, that attract many beautiful native bird. What sets this property apart is its unparalleled proximity to the beach—it's merely a quick stroll away, promising convenience and ease. Situated in the tranquil confines of



North Boomerang, it exudes a serene ambiance that prioritizes comfort and relaxation. Unwinding on the deck during evening sundowners is an absolute must! And as night falls, allow the gentle whispers of the ocean to serenade you into a peaceful slumber, completing the tranquil coastal experience.



SUNDOWNER

1/13 BOOMERANG DRIVE, BOOMERANG BEACH

Located at popular north Boomerang Beach, this fantastic three bedroom townhouse is sunny all year round, airconditioned for your comfort and has a fully enclosed yard. Downstairs accommodation comprises of the master bedroom with queen bed, bathroom with shower, large corner bath and separate toilet and laundry with washing machine and dryer. The kitchen is huge and very well equipped including microwave and dishwasher and the comfortable living area has a TV, DVD, CD



player, reverse cycle air conditioning and a ceiling fan. There is a sunny patio off the living area with gas BBQ and timber outdoor setting and enclosed rear yard. Upstairs you'll find another bathroom and two more bedrooms (one with queen bed and the other with two single beds - both with ceiling fans!) Off street parking provided.



SPINNAKER 2

2/1 KULA CLOSE, BOOMERANG BEACH

This luxurious property is a stunner and has just been recently renovated to fit all your holiday desires. Spinnaker 2 has an unmatched beach house type feel and is within walking distance of our gorgeous Boomerang Beach. Modern three bedroom home surrounded by Boomerang Beach and native landscaped gardens. Master bedroom with queen size bed, walk-in robe and ensuite bathroom. Air conditioning in all bedrooms, Bedroom 2 with double bed, bedroom 3 with 1



King single bed. Updated new bathroom. Living area with timber floors, TV, DVD, Wi-Fi with Chrome Cast and stereo adjoins small deck, kitchen with microwave and dishwasher opens onto covered deck with gas BBQ and outdoor setting. Laundry downstairs with washing machine & dryer, outdoor shower, double carport and off street parking.



TAWARRI

160 BOOMERANG DRIVE, BOOMERANG BEACH

Translating as 'Evening Breeze', this beautiful property is perched on the southern headland of Boomerang Beach and offers a sheltered escape throughout the year. Recently renovated, it is less than 100 metres walk from the sand and surf and has enough parking space for you to bring the boat. Tawarri is set across two levels, with two queen bedrooms upstairs. Downstairs is another queen bedroom and a kids' room with two bunk beds. The property's fully-equipped kitchen has all the modern appliances you need, including a pod coffee machine for making the perfect morning brew. The open-plan living and dining space is drenched in natural light,



with polished marble floors that connect to a large covered deck. From here, you can enjoy sweeping ocean views while cooking up a storm on the four-burner gas barbecue. On the lower level is a second living area with a flatscreen TV and a sofa bed, as well as an additional deck with sun loungers for that afternoon siesta. When you return from the beach, you can rinse off beneath the outdoor shower before throwing your towels into the laundry's front-loader washing machine. Surrounding the property are grassy lawns and gardens planted with citrus trees, herbs and native species.





THE BEACH HOUSE

162 BOOMERANG DRIVE, BOOMERANG BEACH

Experience the allure of The Beach House, an exquisite holiday abode nestled atop the southern headland of Boomerang Beach. Here, bask in the panoramic vistas of the ocean and revel in tranquility, a mere 3-hour journey from Sydney. Embrace the solace of this private sanctuary, offering respite from the bustle of daily life. Radiating a luminous ambiance and adorned with captivating ocean panoramas, this inviting beachfront retreat boasts an expansive open-plan layout. Delight in three sprawling deck



areas, perfect for immersing yourself in the coastal escape this home promises. Thoughtfully designed for families, this haven extends a warm welcome to pets, ensuring an inclusive getaway. Enjoy modern amenities including WiFi, air conditioning, and provided linen—simply bring along your cherished beach towels. Relish the freedom of open-plan living and dining spaces that beckon relaxation and quality time in this coastal haven.



THE POLE HOUSE

58 BOOMERANG DRIVE, BOOMERANG BEACH

Featuring high ceilings, polished floors and exposed wooden beams, this modern holiday home is set across four levels. It can comfortably accommodate up to eight people, making it ideal for large families or two families holidaying together. There are multiple decks from where you can soak up the ocean views and three indoor living spaces so everyone can spread out. There are two queen-size bedrooms on the first level, one of which has two extra single beds, plus a bathroom with shower and a laundry with a front-loader



washing machine and an extra toilet. On the second level is another queen-size bedroom and bathroom, as well as a sitting room where you can retreat with a good book. The light-filled kitchen/dining area is on the third level, with modern appliances and ocean glimpses while you cook. The fourth level is home to the main living area, which has a SmartTV, DVD player and stereo, and opens out onto a deck with a gas barbecue. Reverse-cycle air-conditioning and Wi-Fi are available throughout the property.



THE POINT

2/17 RED GUM ROAD, BOOMERANG BEACH

Within walking distance to the golden sands of Boomerang Beach, The Point is a contemporary beach house perfect for a family or group of friends. Featuring the main living spaces all on one level with a large open plan feel that gravitates to the entertaining deck. The Point is decorated with modern furnishings, and you'll instantly feel the 'beach-vibe' the moment you arrive. Offering three bedrooms; a master with queen bed and ensuite, a 2nd bedroom with a queen bed, and a 3rd that offers 2 sets of bunk beds. You can soak in the



bathtub in the luxury ensuite and enjoy high quality finishes throughout, including an inviting hot and cold outdoor shower! Nestled between the bush and the beach, fall asleep to the sound of the surf and wake to birdsong. Enjoy indoor and outdoor living at its best finished with contemporary conveniences throughout.



THE REEF

1/5 REDGUM ROAD, BOOMERANG BEACH

The Reef presents a serene slice of paradise, and is an ideal spot for indulging in a seaside retreat. Simply take a leisurely stroll across the road, and you'll find yourself at the beachfront. Expect a complete set of linen provided—remember to pack your personal beach towels. Additionally, the accommodation welcomes pets, offers Wi-Fi access, and boasts a private, sun-drenched courtyard. Immerse yourself in the local experience



by exploring nearby cafes and dining spots, all within walking distance. Embrace the opportunity for whale and dolphin observation, relish the thrilling waves for surfing, and enjoy refreshing swims. Perfect for families, this destination is tailored to cater to all age groups, ensuring a delightful and memorable stay.



TWIN PEAKS 1
1/22 BOOMERANG DRIVE,
BOOMERANG BEACH

3 1 8

Set just back from the beach, this townhouse can be booked with Affordable Twin Peaks 2. Both have bathrooms with corner spas, and combined laundries. Twin Peaks 1 has a queen-size bedroom, a double bedroom and an upstairs loft area with four single beds. The fully equipped kitchen has a dishwasher, microwave, freestanding oven and a Nespresso coffee pod machine.



TWIN PEAKS 2
2/22 BOOMERANG DRIVE,
BOOMERANG BEACH

3 1 6

This modern, architecturally designed townhouse has queen-size and double bedrooms, plus an upstairs loft with two single beds. The fully equipped kitchen has a dishwasher, microwave and freestanding electric stove and oven, while the bathroom has a corner spa with a shower over the top and a separate toilet. The bathroom is combined with a laundry that has a top-loader washing machine and a dryer. There's also an outdoor entertaining area with a gas barbecue.



WAVERIDER 1
4A HARROW DRIVE,
BOOMERANG BEACH

3 2 6

Located only a short stroll to the surf and sand of beautiful Boomerang Beach and close to shops and restaurants. This family friendly property has everything you need for a stress free holiday, with Waverider 2 right next door the whole extended family can enjoy a beach holiday. There is a second living space downstairs, perfect for the kids to chill out.



WAVERIDER 2
4 HARROW DRIVE,
BOOMERANG BEACH

3 2 6

Located only a short stroll to the surf and sand of beautiful Boomerang Beach and close to shops and restaurants. This family friendly property has everything you need for a stress free holiday, with Waverider 1 right next door the whole extended family can enjoy a beach holiday. There is a second living space downstairs, perfect for the kids to chill out.

*Stay where you love.
Love where you stay.*

Find the right holiday home to suit your needs in Forster-Tuncurry, Hallidays Point and surrounds.



**Visit forsterholidayrentals.com.au
Phone (02) 6554 7473**

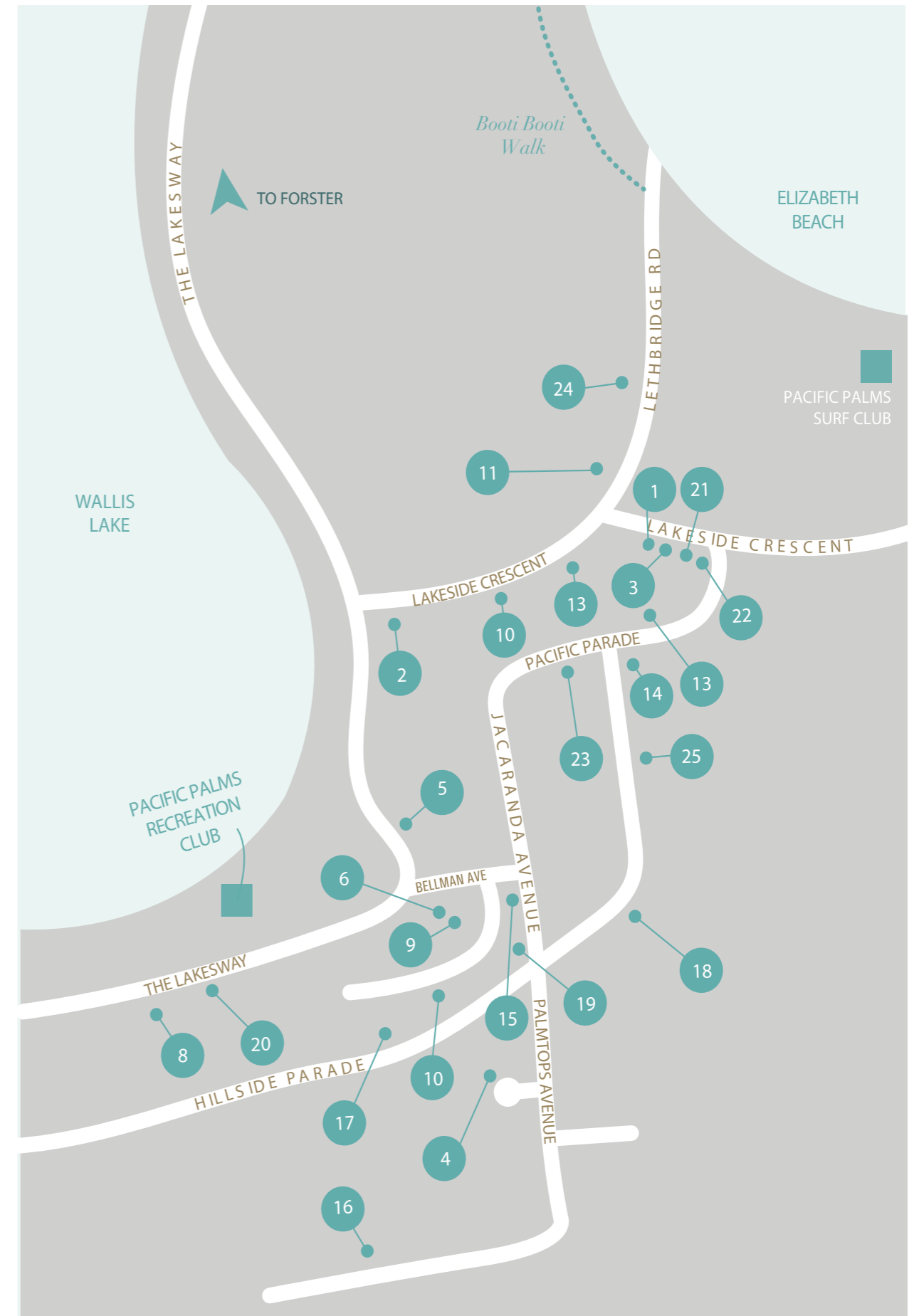


Elizabeth Beach

Elizabeth Beach, affectionately known as 'Lizzie', is one of the few north-facing beaches on Australia's east coast. As it lies within the Booti Booti State Recreation Area, there are no houses on the dunes or beachfront. Lizzie Beach is the most popular beach for children, especially toddlers, and is patrolled by lifesavers from the Pacific Palms Surf Life Saving Club during school holidays and on weekends from the beginning of the spring school holidays until the end of the Easter school holidays. Elizabeth Beach is also home to one of the few ocean launching spots for boats and, although the ramp stops short of the water, the fine white sand packs firm, allowing fishermen to launch easily off the beach into the surf. There's plenty of good fishing here too!

MAP INDEX

- | | |
|----|--|
| 1 | AT LIZZIE |
| 2 | BANGALOW |
| 3 | BESSOU |
| 4 | BLUE WATER |
| 5 | BUSH 2 BEACH |
| 6 | CLARABELLE COTTAGE |
| 7 | LAGO AT LIZZIE |
| 8 | LAKE VIEW HOUSE, LASKE GETAWAY & LAKE ESCAPE |
| 9 | LILYS |
| 10 | LIZZIE BLISS |
| 11 | LIZZIE PALMS 1 |
| 12 | LIZZIE SHACK |
| 13 | MONTEZUMA |
| 14 | PACIFIC PALMS |
| 15 | PAWS AND RELAX |
| 16 | RAINFOREST TRANQUILITY |
| 17 | SEA BREEZE |
| 18 | SEACLUSSION |
| 19 | SPLASH |
| 20 | TALLOWOOD |
| 21 | THE PALMS |
| 22 | THE BEACH HOUSE AT LIZZIE |
| 23 | THE ROYAL CUBAN |
| 24 | TRADEWINDS |
| 25 | WEE FIVE |





AT LIZZIE

28 LAKESIDE CRESENT, ELIZABETH BEACH

This contemporary, sunlit, and expansive 3-bedroom beach house, architect-designed, offers a sense of privacy and ample space. Located just 150 meters from the breathtaking Elizabeth Beach, 'At Lizzie' presents an ideal retreat for families or couples seeking relaxation, with effortless access to the beach and a delightful ambiance. The open-plan layout features a generously equipped kitchen, dining, and living area that seamlessly extends to a spacious North-facing deck. Entertainment amenities abound, including a sizable

flat-screen plasma TV, WiFi connectivity, a stereo system, DVD player, Kfee Coffee espresso machine, and an MP3/iPod dock for your enjoyment. Each of the queen and king bedrooms features its own exclusive outdoor hot showers and is complemented by private palm-lined courtyards, fostering a serene atmosphere. The fenced yard ensures a safe environment for children, while ceiling fans in all three bedrooms enhance comfort throughout.



BESSOU

28 LAKESIDE CRESENT, ELIZABETH BEACH

Set amid lush, subtropical gardens, this striking holiday home has been designed with bold colours. It offers a private escape while being within easy access to the local beach, golf courses and the nearby national parks. The single-storey home has three bedrooms, two of which boast king-size beds, garden courtyards and hot outdoor showers. The third bedroom is equipped with two single beds that can be transformed into a king, plus two single trundle beds. In addition to the main bathroom with a shower and toilet, there is also a separate

toilet. You can relax in the open-plan living area where you'll find a large TV, a DVD player and an eight-seat dining table, with unlimited Wi-Fi available throughout the property. The stylish kitchen features an island bench and modern appliances, as well as a built-in laundry with a washer and dryer. You can relax in complete privacy in the timber-fenced front yard, which features a small lawn and sun-drenched deck. Strictly no pets and no smoking.



BANGALOW

3 THE LAKES WAY, ELIZABETH BEACH

Nestled in a peaceful bushland setting, this contemporary home features timber floors and contemporary furnishings for a relaxed holiday stay. It can comfortably accommodate one large family or two families while offering easy access to the beaches of Booti Booti National Park, a magical setting for swimming, fishing and surfing. The single-storey property is designed with three bedrooms, including a queen bedroom with an ensuite that opens out onto the balcony and another queen bedroom with an additional bunk, plus a

third bedroom that's equipped with a triple bunk bed (single over double). The main bathroom has a shower, toilet and a freestanding bathtub while the laundry is conveniently equipped with a washing machine. On hot days, you can retreat to the air-conditioned, open-plan living and TV area or cook in the on-trend kitchen. With its wide, wooden deck and serene bushland views, the alfresco dining area is ideal for summer barbecues thanks to its outdoor furniture and ceiling fan.



A summer day on Elizabeth Beach



BLUE WATER

2 SKYLINE PLACE, ELIZABETH BEACH

Within walking distance of both Elizabeth Beach and Wallis Lake, this stylish, four-bedroom holiday house offers the best of both worlds. It has plenty of room to park your boat, with the ramp of the Pacific Palms Recreation Club just a stone's throw away. The on-site restaurant is open for lunch and dinner, with a great social atmosphere and sweeping views across the lake from its grassy lawn. Set across two stories and air-conditioned throughout, Blue Water features a large master bedroom with an ensuite bathroom and a private deck. Also on the upper level is a modern bathroom with a bathtub that caters to guests staying in the other



 3  2  7

bedrooms. You can enjoy the best of open-plan living in the combined kitchen, lounge and dining space, which connects seamlessly via large glass doors to the outdoor entertaining area. Begin the day with breakfast at the spacious island bench or settle into one of the many outdoor chairs with your morning coffee. In the comfortable lounge area, you'll find a wall-mounted smart TV for watching all your favourite shows and Wi-Fi is available throughout the property. The lower-level laundry features a washing machine and dryer, plus a separate toilet.



CLARABELLE COTTAGE

1/17 BELLMAN AVE, ELIZABETH BEACH

Conveniently located near the shores of Wallis Lake, Clarabelle Cottage is a three-bedroom townhouse with everything you need for a memorable holiday. It's a perfect escape for boaters (with a boat ramp just a stone's throw away) and is a short drive from the sands of Elizabeth Beach. As well as two queen bedrooms (one with an ensuite bathroom), there is an extra room with a triple bunk bed for kids, plus a separate bathroom. The gourmet kitchen comes complete with an oven, microwave and dishwasher, as well as a stylish breakfast bar. Adjacent is the open-plan living

 3  2  6 

and dining space, which maintains an ideal temperature year-round thanks to an Electrolux inverter system. In the evenings, you can relax in front of the TV or socialise on the adjacent deck while enjoying the refreshing breezes. Surrounded by tranquil bushland, the deck features an outdoor setting and a flat-top barbecue, making it the perfect place to unwind at the end of the day. Additionally, there is a laundry with a top-loader washing machine that offers direct access to an outdoor line.



BUSH 2 BEACH

9 OLD MAIN ROAD, ELIZABETH BEACH

Bush 2 Beach presents an ideal retreat for larger families, two groups, or three couples, featuring two lavish holiday pavilions. This destination boasts ample space, natural light, and seclusion, while conveniently situated within a leisurely stroll to the lake, club, tennis courts, and Elizabeth Beach. Divided into two fully self-contained pavilions, it caters perfectly to those who relish ample personal space. The setting blends formal and informal atmospheres,



 4  3  10

showcasing a remarkable indoor-outdoor lifestyle. The property showcases an expansive entertaining deck that seamlessly links the two pavilions, providing both privacy and stunning vistas. With open and covered areas, it offers a perfect balance. Additionally, the deck features a large outdoor table, umbrella, and BBQ, complemented by a child-friendly lawn and garden, ensuring a delightful experience for everyone.



LAGO AT LIZZIE

17A HILLSIDE PARADE, ELIZABETH BEACH

Tucked away on a peaceful street in Elizabeth Beach, Lago at Lizzie is a beautifully appointed three-bedroom home that makes an ideal base for exploring everything the Pacific Palms region has to offer. It's just 10 minutes' walk from the sands of Elizabeth Beach and within a short drive of Boomerang and Blueys beaches. You can take your pick of the three queen bedrooms, one of which has an ensuite bathroom and a walk-in robe. The open-plan living space includes a well-equipped kitchen with a coffee machine and

 3  2  6

a dishwasher, as well as an eight-seater dining table. At the end of the day, you can retreat to the cosy lounge, which is equipped with a smart TV. Outside is a large deck with seating for eight, plus a barbecue where you can cook up a storm in the evenings. During the day, you can settle into the sun loungers with a good book while enjoying tranquil views across the palm-studded garden. Air conditioning and ceiling fans are provided throughout the property, as is complimentary Wi-Fi.





LAKE VIEW HOUSE

30 THE LAKES WAY, ELIZABETH BEACH

Experience the charm of Lake View House, an exquisitely adorned holiday retreat. Lake View House provides three options for your stay, including renting the whole house, or just the upper level (Lake Getaway), or the lower level (Lake Escape). No matter which option you choose, you have the property to yourself, no other guests will be there with you. Lake View House boasts 3 bedrooms, and 3 bathrooms and sleep 6. Lake Getaway is the upper level and sleep 4 across 2 bedrooms and 2 bathrooms, and Lake Escape on the lower

level is perfect for couple and sleeps 2. Nestled conveniently across from the boat ramp and The Recky Club, this haven is mere moments from the serene Elizabeth Beach, as well as the captivating shores of Boomerang and Blueys Beach. Guests are provided with a convenient picnic set and rug to enjoy leisurely picnics amid the park's picturesque locations, mere minutes away from the accommodation. Revel in the convenience and serenity of this retreat, perfectly positioned to cater to a spectrum of holiday adventures.



LILY'S

2/17 BELLMAN AVENUE, ELIZABETH BEACH

Offering gorgeous bushland views, this well-equipped townhouse is conveniently located near the boat ramp of Wallis Lake and the protected waters of Elizabeth Beach. It features polished timber floors and an open-plan living area that connects to a shaded deck with a family-size barbecue. There are two queen bedrooms, one with an ensuite, and a third bedroom with two bunk beds that is ideal for kids.

The main bathroom is equipped with a shower while the laundry has a washing machine and a dryer. At the end of the day, you can cook up a storm in the large kitchen, which has a microwave, oven, dishwasher and coffee machine. An Electrolux inverter system will keep you cool in the hot weather while the comfortable lounge area is decorated with inspiring photographs of the surrounding region.



LIZZIE BLISS

10 LAKESIDE CRESENT, ELIZABETH BEACH

Experience an opulent entertainer's haven within walking distance to Elizabeth Beach and the Surf Club. This luxurious single-level dwelling, ideal for weddings and lavish gatherings, boasts the convenience of ducted air conditioning. Revel in the grandeur of a five-bedroom layout featuring expansive ensuite and bathroom spaces, along with two family rooms that open onto a covered outdoor entertaining area, adorned with a captivating Warrior statue and a pergola. The

generously sized primary bedroom offers a touch of luxury with his and hers vanity basins in the ensuite and a roomy walk-in wardrobe. Perfect for accommodating two families, extended groups, or a circle of close-knit friends. Indulge in a fully equipped kitchen featuring sleek stone benchtops, top-of-the-line stainless steel appliances, and a convenient butler's pantry, completing this magnificent abode.



LIZZIE PALMS 1

1/15 LETHBRIDGE ROAD, ELIZABETH BEACH

Nestled amidst the stunning landscape of a native palms and eucalypts forest, Lizzie Palms 1 guarantees a serene getaway on the upper level. Embraced by Booti Booti National Park, this haven invites you to bask in tranquility on the deck amidst vibrant local birdlife and within the comforting embrace of its cozy interiors. Positioned conveniently, it's a leisurely stroll away from the pristine Elizabeth Beach, the sole patrolled Pacific Palms beach during summer, extending its allure to Shelley Beach. Additionally, its central location provides easy

access to Wallis Lake's Recreation Club, boat ramps, and tennis courts. Adventure seekers will revel in the direct pathways to Booti Booti's hiking trails, access to the lakes for sailing, and a variety of excellent golf courses in Sandbar, Forster, and Tuncurry. Whether you seek beachfront bliss, outdoor exploration, or simply unwinding amid nature's beauty, Lizzie Palms 1 offers an ideal escape amidst this picturesque paradise.





LIZZIE SHACK

5 PACIFIC PARADE, ELIZABETH BEACH

Embodying the essence of a classic beach escape, the Lizzie Shack stands as a charming two-bedroom coastal cottage, exuding a rustic simplicity ideal for a relaxing retreat. Inside, its cozy ambiance encompasses an old-fashioned kitchen equipped with a freestanding stove/oven, complemented by essential appliances like a fridge and microwave. The bathroom features a vanity, a corner shower situated over a bathtub hob, and a separate toilet for convenience. Step

outside to discover a barbecue area accompanied by an outdoor dining setting, all set against the backdrop of a vast backyard, inviting opportunities for cricket matches or letting children roam freely - complete with the added delight of a trampoline. This idyllic setting caters perfectly to laid-back getaways and surfing weekends, welcoming not just the beach enthusiast but also accommodating furry companions for a complete family experience.



MONTEZUMA

22 LAKESIDE CRESENT, ELIZABETH BEACH

Welcome to "Montezuma," a classic beach holiday home nestled only a short stroll Elizabeth Beach. This home has all your creature comforts - prepare for a delightful getaway in your new 'home-away-from-home.' "Montezuma" can comfortably accommodate up to 6 guests, offering 3 bedrooms and 2 bathrooms (one recently renovated, and the second in the combined laundry/bathroom). For your convenience, there's ample space for two cars or a boat next to the house and we're also pet-friendly, should you choose to travel with

your furry friends. The yard is large, but not fenced. There is a BBQ and seating on the back verandah. Feel the cool breeze from our air conditioning system while lounging in the living area. Air conditioning also in the 2 front bedrooms. Back bedroom with the 2 single beds has a stand fan. Make use of our TV or just retreat to the balcony, glass in hand to soak up the beach vibes. Your culinary needs are also catered for in the kitchen, furnished with essential appliances including a dishwasher, microwave oven, stove and a refrigerator.



PACIFIC PALMS

1/16 PACIFIC PARADE, ELIZABETH BEACH

This charming vacation home nestled in the serene Elizabeth Beach boasts a spacious layout with open-plan living and dining spaces. Downstairs, revel in the comfort provided by the split-system Air Conditioner while enjoying entertainment through the TV and complimentary DVD collection. The well-equipped kitchen, featuring a microwave and a compact stereo, opens onto a private courtyard adorned with graceful palm trees, a gas BBQ, and an inviting outdoor setting. Ascending upstairs reveals three inviting bedrooms: a master

bedroom with a queen-sized bed, a second bedroom furnished with a double bed, and a third bedroom offering a single bunk bed and an additional single bed. The three-way bathroom, complete with a soothing bath and a hairdryer, caters to convenience. Additional amenities include a secure lockup garage, a laundry area housing a washing machine and dryer, an outdoor hot/cold shower, and an extra toilet. This delightful property offers a perfect blend of comfort, convenience, and coastal charm for an unforgettable holiday experience.



PAWS AND RELAX

43 JACARANDA AVENUE, ELIZABETH BEACH

Designed specifically for families travelling with their fur babies in tow, this relaxed property lies a short stroll from Elizabeth Beach, Booti Booti National Park and the sparkling waters of Wallis Lake. It's set across two levels, with all four bedrooms upstairs, including two queen-bed rooms, a triple bunk room (single over double) and another with two single beds. In addition to the main bathroom with a large tub, the upstairs area also has a light-filled open-plan lounge and dining space, plus a well-equipped kitchen with an electric stove and oven,

dishwasher and microwave. The living space opens out onto a covered verandah with an outdoor dining table and barbecue that's ideal for entertaining in the evening. Downstairs you'll find another bathroom, a games room with a table tennis table and a pool table, plus an additional kids' play area. The fully fenced yard means the kids and their four-legged friends can play safely, and the garage has a laundry if you want to stay up to date with the washing.





RAINFOREST TRANQUILITY

8 RIDGELINE CIRCUIT, ELIZABETH BEACH

Huge windows, over-sized sliding doors open to a private breakfast bar overlooking the Rainforest and outdoor kitchen/barbecue adjoining the indoor kitchen. Tucked at the end of a cul de sac in a quiet residential street just 2 minutes from the Ocean ensures tranquility and privacy. There is an outdoor cold shower for an after beach wash. Two luxurious large Ensuite King Rooms, and two bedrooms with 2 Long Singles in each that can be made into King Beds on request share an adjoining bathroom. Its a large home with oil heaters in each downstairs bedroom and air-conditioners in main area and



top 4 poster bedroom, so keeping warm is never a problem during winter, winter sunshine also fills all living spaces. there are extra blankets and throws provided for a cosy feel. A Nespresso Coffee Maker is provided and a good-sized extra fridge sits in the laundry. Linen and towels supplied please bring your own beach towels. There is a large concrete driveway and gravel driveway at the front of the house for your cars/ boat - please do not park in the cul de sac. Plenty of extra parking is available on left side next to the Rainforest on the wildlife corridor.

5 3.5 10



SEA BREEZE

40 HILLSIDE PARADE, ELIZABETH BEACH

Nestled in a serene and picturesque locale, this contemporary and generously spacious beach residence offers an idyllic setting, elevated to provide breathtaking vistas of the lake, ocean, and surrounding national parks. Its prime location just a brief stroll from the sandy shores makes it a perfect coastal retreat. The expansive deck, designed to capture refreshing sea breezes, is an ideal spot for unwinding while indulging in a delightful BBQ experience. Equipped with air conditioning and offering full linen services (just remember to pack your beach towels).



This accommodation also considers pets upon application. Accessible WiFi, ceiling fans, and a family-friendly environment further enhance the comfort of your stay. Moreover, guests can revel in the opportunity for whale and dolphin sightings. Conveniently positioned, the property is a mere 8-minute drive to Elizabeth Beach and only 5 minutes away from the scenic Wallis Lake. For added entertainment, there's table tennis available, an enclosed yard for added security, and a covered outdoor area.

5 2 9



SEACLUSION

34 HILLSIDE PARADE, ELIZABETH BEACH

Seaclusion is a contemporary homes featuring an expansive open plan living and dining area coupled with an adjoining powder room. Accessible through double sliding doors, a covered entertaining deck welcomes you, furnished with an 8-seater outdoor setting and a stainless hooded BBQ. The deck also offers picturesque vistas of the adjacent bushland and features a cozy outdoor lounge area. Within the abode lies a modern kitchen featuring a Caesar stone island, a butler's pantry, a gas cooktop, a double oven, and a double door fridge complete with an ice and water dispenser, accompanied by

4 2.5 8



a dishwasher for convenience. A secondary living or lounge area serves as a versatile space perfect for teens, guests, or indulging in sports entertainment on the TV, supplemented with WiFi availability, Bluetooth speakers, and a CD player. Indulge in the main bathroom's luxuries, hosting a freestanding bath and a separate frameless shower. Laundry facilities accommodate large loads with a washing machine, while additional amenities like a clothes dryer and an extra fridge await in the garage. Off-street parking is ample, catering to vehicles, boats, with the added convenience of an electric car charger.



SPLASH

45 JACARANDA AVENUE, ELIZABETH BEACH

Beautifully refurbished, this charming three-bedroom residence offers an ideal family haven within a stroll of the serene Lake, The Recky Club, and Elizabeth Beach. Spread across split levels, the living area boasts a cozy combustion fire and a television, while the kitchen is equipped with sleek stainless steel appliances, including a dishwasher. Conveniently, the laundry is furnished with both a washing machine and dryer, alongside a second bathroom featuring a shower and toilet. The main bathroom presents a luxurious sunken bath in

3 2 6



addition to a shower. Entertainment is at its finest in the family room, furnished with a television and DVD player. The dining area seamlessly extends to the rear verandah, perfect for hosting delightful family barbecues amidst the landscaped backyard. This thoughtfully renovated home invites comfortable living with its modern amenities and inviting spaces, promising a delightful haven for family living near the picturesque surroundings of Elizabeth Beach.



TALLOWOOD

29 THE LAKES WAY, ELIZABETH BEACH

Architecturally striking and designed to impress, this four-bedroom property boasts a waterfront setting overlooking Wallis Lake. It's ideal for families wanting to get out on the water, with the public boat ramp directly across the road. Soaring ceilings, whitewashed walls and timber floors are featured throughout its open-plan living spaces while the private loft bedroom with ensuite bathroom creates a separate retreat. There's an additional queen bedroom and two rooms with twin king singles, plus an expansive, light-

filled bathroom with a double shower and spa bath. You can relax in the open-plan living and dining area where you'll find a mini home theatre or cook up all your favourites on the five-burner gas stove in the modern kitchen. Wrapping around the property is a covered deck with outdoor seating and a four-burner barbecue; the perfect place to dine while watching the sunset over the lake. A front-loader washing machine and dryer in the laundry means you can keep on top of washing and off-street parking is provided for two cars.



THE BEACH SHACK @ LIZZIE

1/26 LAKESIDE CRESENT, ELIZABETH BEACH

A sophisticated haven just a 5-minute stroll from the shoreline, this refined retreat offers space for up to 8 guests. The chic 4-bedroom residence showcases opulent bathrooms featuring overhead rain showers with vistas of swaying palms and a generously sized, indulgent bathtub. The Master Bedroom affords a secluded balcony with breathtaking views of Booti Booti National Park. The lavish two-way bathroom invites with its alluring deep soaking tub. Inside, an elegant air-conditioned living and dining area, furnished with plush leather lounges, a Television, and DVD player, sets the tone for relaxation. The chef's

kitchen, equipped with top-tier appliances including a Smeg oven, gas cooktop, automated coffee machine, microwave, dishwasher, wok, blender, and juicer, caters to culinary desires. Expanding the living space, double sliding doors lead to an outdoor entertainment deck and spacious lawn. Guests can enjoy Wi-Fi access, a sleek BBQ area with comfortable outdoor seating, convenient laundry amenities featuring a washing machine and tumble dryer, and a refreshing outdoor shower offering both hot and cold water options.



THE PALMS

1/30 LAKESIDE CRESENT, ELIZABETH BEACH

Nestled right across from the scenic Booti Booti National Park reserve, this impeccably designed four-bedroom residence offers an idyllic retreat, just a brief stroll amidst tropical palms leading directly to Elizabeth Beach. Its northern orientation bathes the modern, luminous interiors in the essence of coastal living. An impeccable choice for a lock-up-and-go seaside escape, this home boasts a double car garage with internal access, four bedrooms, expansive entertaining decks, and a generously proportioned open-plan living area. Perfect for families, the

property is equipped with family-friendly amenities, WiFi, and welcomes small dogs. Moreover, all the necessary linens are provided, requiring only your beach towels for a complete stay. Enjoy the convenience of a flat walk to Elizabeth Beach, while every room benefits from reverse cycle air conditioning for comfort. Additionally, the garage features an electric car charging point, catering to eco-conscious travelers seeking a sustainable stay.



THE ROYAL CUBAN

20 PACIFIC PARADE, ELIZABETH BEACH

Featuring luxurious amenities and a few eclectic touches, this two-storey property is just a short stroll from the protected waters of Elizabeth Beach and Booti Booti National Park. It's been designed specifically for families, with a trampoline for the kids and a fenced-in yard that makes it ideal for those travelling with pets. There are three queen bedrooms, two of which have ensuite bathrooms and one that includes a laundry with washer and dryer. The fourth bedroom is equipped with a triple bunk bed (single over double) and the main bathroom has

a shower and freestanding tub. Upstairs is the open-plan living/dining area, with a wall-mounted TV, a table that seats six and a stylish kitchen complete with a gas stovetop and dishwasher. This opens out onto a covered deck that's ideal for entertaining thanks to its 12-seater table, barbecue and ceiling fan. There's another lounge room downstairs with a sofa bed and wall-mounted TV, plus a double garage where you can park with peace of mind.





TRADEWINDS

5 LETHBRIDGE ROAD, ELIZABETH BEACH

At Trade Winds, you'll discover abundant opportunities to soak in the mesmerizing view of Elizabeth Beach right from your front window or while unwinding at the dining table. This exceptional property situated at Elizabeth Beach is meticulously designed to comfortably accommodate your family without straining your budget, ensuring a serene and stress-free family retreat. Embracing this awe-inspiring panorama is a rare luxury, nestled in what can only be described as one of the most extraordinary settings imaginable. Enjoy the convenience

of being just a leisurely stroll away from the safety-patrolled and family-friendly shores of Elizabeth Beach, providing an unparalleled experience. Features include direct beachfront access with stunning views, a family-oriented environment, and an expansive open-plan living and dining area, perfectly suited for relaxation and bonding. Plus, stay connected with the provided Wi-Fi, adding modern convenience to your tranquil escape by the beach.



WEE FIVE

6 HILLSIDE PARADE, ELIZABETH BEACH

Discover a delightful holiday sanctuary nestled in the breathtaking beauty of Elizabeth Beach! With its contemporary kitchen and bathrooms, this family retreat promises to captivate your senses. Picture a cozy family room, an oasis for unwinding post a sun-soaked beach day, complete with an expansive television and ample room for the entire family to unwind. Adding to its allure, this property showcases an additional living area equipped with another television, creating an ideal space

for the kids to engage in playful activities and movie nights. Enjoy the convenience of a short, level stroll to the glistening Elizabeth Beach, while being just moments away from The Recky Club. Moreover, the fully fenced backyard ensures a secure environment for both the kids and your furry companion to play and roam freely. This haven offers not just comfort but a seamless blend of relaxation and recreation, making it an ideal holiday retreat for families seeking an unforgettable getaway.



Holiday Management with a difference.

Find us locally at Blueys Beach.



Why you should list your holiday home with our trusted team...

We list holiday homes across the Pacific Palms area and offer a holiday team with extensive holiday management experience. Communication, we pride ourselves on providing proactive communication to our guests and owners. Transparency, so that you can see what we can see. Technology, we use a fully integrated booking system, trust accounts, maintenance system, inspections & communications platform.

**Phone us on 02 6554 0550 or visit our office at Blueys - 209 Boomerang Drive, Blueys Beach.
Or email us property@thepalms.com.au**

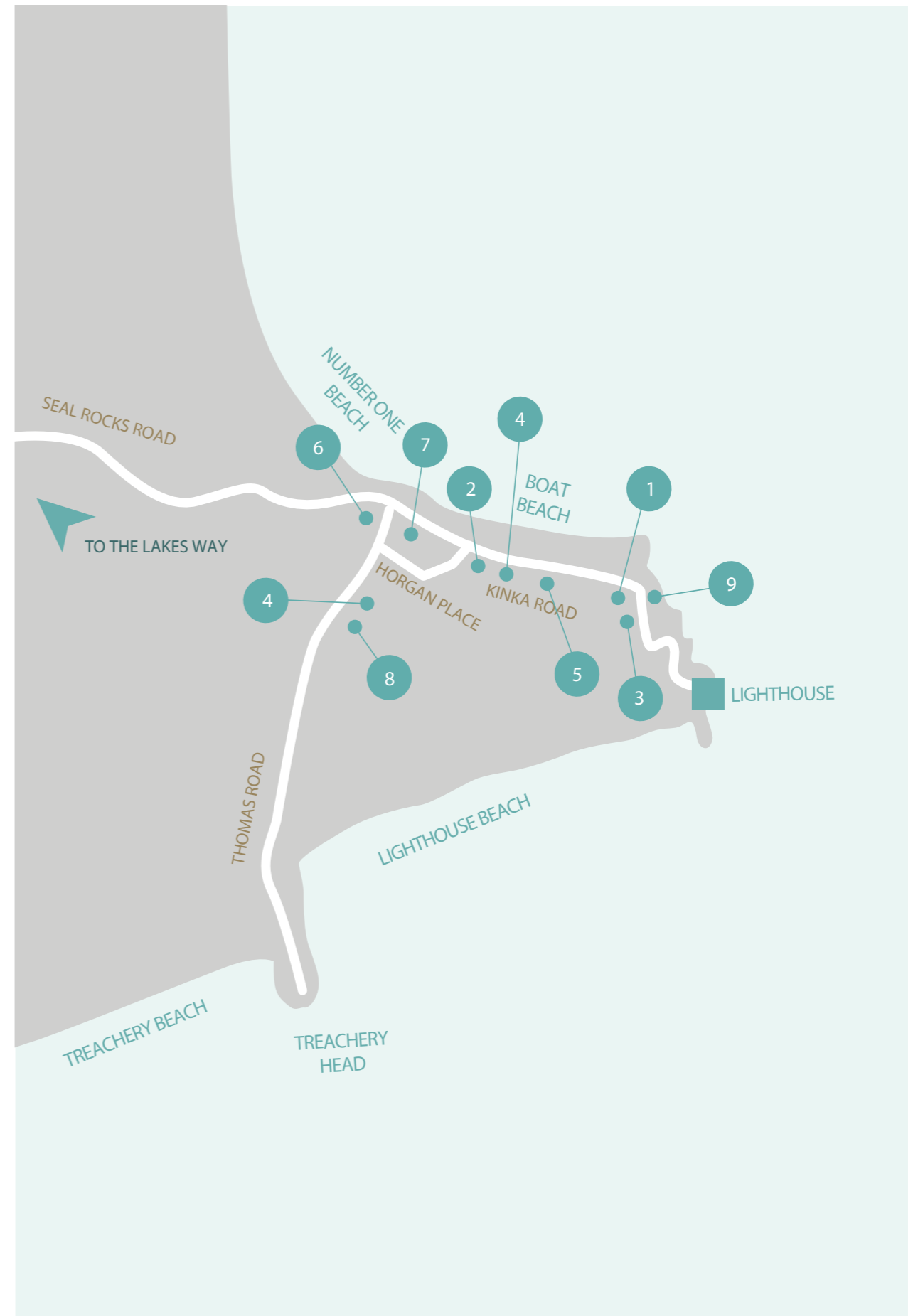


Seal Rocks

It's said you are only a stranger once in Seal Rocks, as all it takes is one visit to this delightful fishing village to want to return time and time again. One of the only remaining small coastal hamlets to have avoided development, Seal Rocks is known for its isolation, untouched beauty and landmark Sugarloaf Point Lighthouse. Blessed with several beautiful beaches including Number One Beach, Boat Beach, Lighthouse Beach, Treachery and Yagon, Seal Rocks is surrounded by national parks and headlands, which offer spectacular, uninterrupted ocean views.

MAP INDEX

- | | |
|---|---------------|
| 1 | BRIESTA |
| 2 | CAIR PARAVEL |
| 3 | FAR SHORE |
| 4 | PIPPIS |
| 5 | SEA SHACK |
| 6 | SEASCAPE |
| 7 | SURF SHACK |
| 8 | THE LAZY SEAL |
| 9 | THE SHACK |





BRIESTA

56 KINKA ROAD, SEAL ROCKS

Offering a front-row seat for watching the waves break on Boat Beach, Briesta is a charming holiday cottage in Seal Rocks. The north-facing aspect means it is drenched in sun, with its private terrace looking out across the sparkling waters of Sugarloaf Bay. Polished timber floors are featured throughout the property while a combustion fireplace will keep you cosy in the winter months. As well as two queen-size bedrooms, there's a third bedroom that's equipped with two single beds,



 3  1  6

while the bathroom has a shower and washing machine. The galley-style kitchen comes complete with a microwave, oven and dishwasher while the six-seater dining table and lounge area open out onto the beachfront terrace. Here you'll find a gas barbecue and outdoor furniture, as well as sun loungers for soaking up the rays. All Seal Rocks properties are supplied with tank water that is not suitable for drinking. Strictly no pets.



FAR SHORE

11 THOMAS ROAD, SEAL ROCKS

Experience the serene beauty of Seal Rocks with this charming coastal retreat boasting stunning ocean and beach vistas. Nestled on the tranquil end of Kinka Rd, this expansive two-story home embodies luxurious coastal living, perfect for two families seeking a relaxed getaway. Boasting four bedrooms, this abode exudes coastal character and charm while offering direct sea views. A mere one-minute stroll leads you to Boat Beach, while a pleasant walk takes you to



 4  1  8

the iconic Seal Rocks Lighthouse. Unwind on the spacious wrap-around hardwood deck and immerse yourself in the peaceful ambiance. Take advantage of the crystal-clear blue waters for a refreshing swim or wander up to the Lighthouse to witness breathtaking sunsets. Embrace the laid-back coastal lifestyle in this idyllic setting, where every moment promises relaxation and natural splendor. Strictly no pets.



CAIR PARAVEL AT SEAL ROCKS

18 KINKA ROAD, SEAL ROCKS

Perched above the sands of Boat Beach, this breezy property lies in the heart of Seal Rocks, just a short drive from the Sugarloaf Point Lighthouse. Set across two storeys, you'll find a queen bedroom and a room with two king singles upstairs, with this configuration repeated in the two downstairs bedrooms. There are bathrooms with showers and toilets on both levels, and there's also a laundry with a washing machine and dryer. When it's time to cook, you can take advantage of the stove, oven, microwave and Bosch



 4  2  8

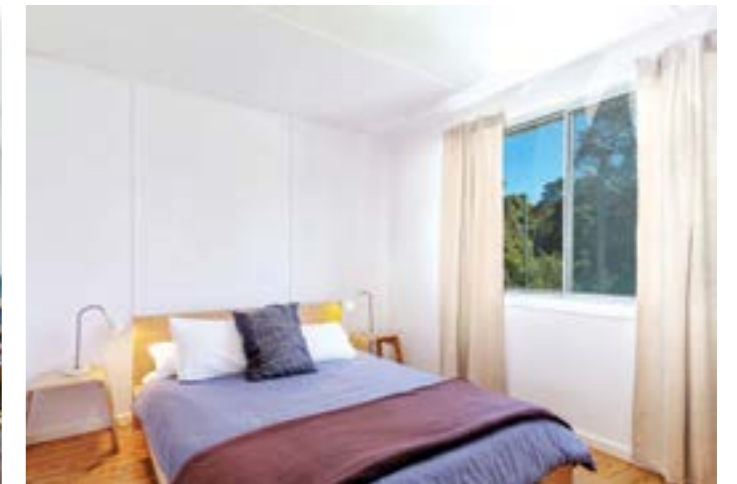
dishwasher in the kitchen, which offers waterfront views. The adjacent living/dining area has a TV, DVD and Blu-ray player and opens out onto a timber deck and lawn. Here you'll find a barbecue, outdoor furniture and a shower for rinsing off when you return from the beach. All Seal Rocks' properties are supplied with tank water that is not suitable for drinking. Strictly no pets.



PIPPIS - A CLASSIC BEACH HOUSE

11 THOMAS ROAD, SEAL ROCKS

True to its title, this charming beach house set just back from the water has everything families need for a relaxed stay, including three bedrooms with queen, double and bunk bed configurations. The light-filled bathroom has a shower and toilet, as well as a front-loader washing machine and a dryer. Featuring wooden floorboards and whitewashed walls, the open-plan living/dining space has a six-seater table, comfortable couches and a combustion fireplace. Entertainment is available thanks to the Wifi, TV, DVD player



 3  1  6

and iPod dock, meaning you can listen to all your favourite tunes while cooking in the well-equipped kitchen. A highlight of its modern appliances is the Nespresso coffee machine. In the backyard you'll find a grassy lawn, wood fire pizza oven and gas barbecue, as well as an outdoor setting. All Seal Rocks properties are supplied with tank water that is not suitable for drinking. Strictly no pets.



SEA SHACK

34A KINKA ROAD, SEAL ROCKS

Offering both ocean and bush views, this contemporary beach townhouse is designed with entertaining in mind. It has a gourmet kitchen that's decked out with stainless steel appliances and connects to the breezy courtyard through a servery-style window. Begin the day with a coffee from the K-Fee coffee machine, then soak up the water views through the large lounge room windows. The open-plan living/dining area features polished concrete floors and a Juliette balcony, as well as a breakfast bar and bench-seat dining table. Wi-Fi is available throughout the property and you can connect to

the iPod dock and Bluetooth speakers. The master bedroom has a queen bed, ensuite bathroom and private balcony, while the second bedroom has both queen and single beds. As well as a light-filled bathroom, there's a laundry with a front-loader washing machine and a dryer. Barbecue enthusiasts can take advantage of the Weber and outdoor setting in the courtyard, which is protected beneath a shade sail. All Seal Rocks properties are supplied with tank water that is not suitable for drinking. Strictly no pets.



SEASCAPE

2 KINKA ROAD, SEAL ROCKS

Perched atop a headland overlooking Boat Beach, this comfortable holiday retreat can accommodate up to six people. It backs onto bushland on the road to Number One Beach and is wheelchair accessible. The modern, open-plan layout includes a living/dining area with ocean views, plus a flatscreen TV and a DVD player. This space connects to the fully equipped kitchen and opens out onto a partially covered deck, where you'll find a barbecue and outdoor table. You can kick back in one of the sun loungers overlooking the peaceful garden, with plenty of room to park a boat if needed. Timber



floors are featured throughout the property, including in the three bedrooms, which include a master bedroom with an ensuite and a room with twin singles. The third bedroom has a queen sofa bed and can also be used as a sitting room. As well as the main bathroom with shower and toilet, there's a laundry with a washing machine, a dryer and another toilet. All Seal Rocks properties are supplied with tank water that is not suitable for drinking. Strictly no pets.



SURF SHACK @ BOAT BEACH

8 KINKA ROAD, SEAL ROCKS

Eclectically designed and pet-friendly, this art-filled shack offers a front-row seat for watching the surf roll in at Boat Beach. It can comfortably accommodate up to eight people, with a self-contained unit downstairs for couples or teenagers wanting their own space. On the upper level is a queen bedroom that's vibrantly decorated with colourful artworks, as well as a second bedroom with two sets of bunk beds. The bathroom is classically styled with black-and-white tiling and features a toilet, shower and basin. In the light and bright kitchen, you'll find an oven and a stove for all your cooking



needs, plus a stainless steel fridge and freezer. The open-plan living and dining space has a timber table and comfortable couches where you can settle in to watch your favourite shows on the flatscreen TV. Surrounding the Surf Shack are multiple outdoor spaces where you can soak up the ocean views, including a front verandah and a side deck that's ideal for entertaining. At the back of the house, there is plenty of space for kids to run around, as well as a gas barbecue and an outdoor fire pit for those chilly nights.



THE LAZY SEAL

17 THOMAS ROAD, SEAL ROCKS

Just a short walk from beautiful Boat Beach is this newly-renovated, four-bedroom holiday home, which can comfortably accommodate up to 10 people. It enjoys easy access to the famous Sugarloaf Point Lighthouse and all the attractions of the Seal Rocks Nature Reserve. Modern, light and airy, the Lazy Seal features two queen bedrooms upstairs and two rooms with triple bunk beds downstairs. There are modern bathrooms on both floors, plus a laundry on the lower level with a washing machine and direct access to outdoor hanging space. Also downstairs is a TV family room

where kids can retreat. At the heart of the home is the open-plan living and dining space, which comes complete with a flatscreen TV and DVD player. This connects seamlessly to the fully-equipped kitchen with its oven, dishwasher and microwave. The large deck is completely covered so you can dine alfresco in all weather conditions, with a barbecue and outdoor table among its amenities. Please be aware that there are no internal stairs and access between the upper and lower levels is outside only. Strictly no pets.



THE SHACK

55 KINKA ROAD, SEAL ROCKS

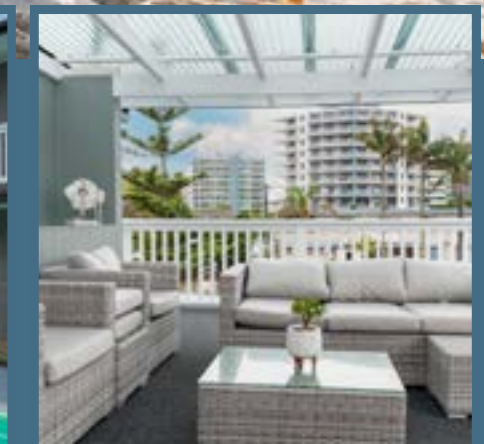
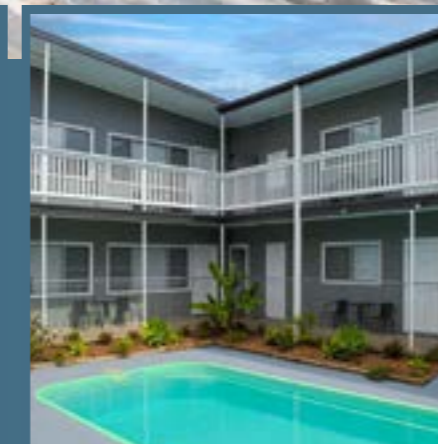
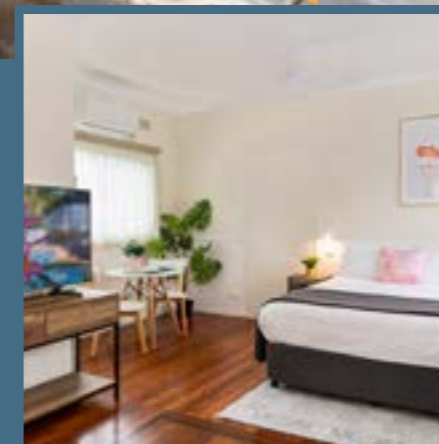
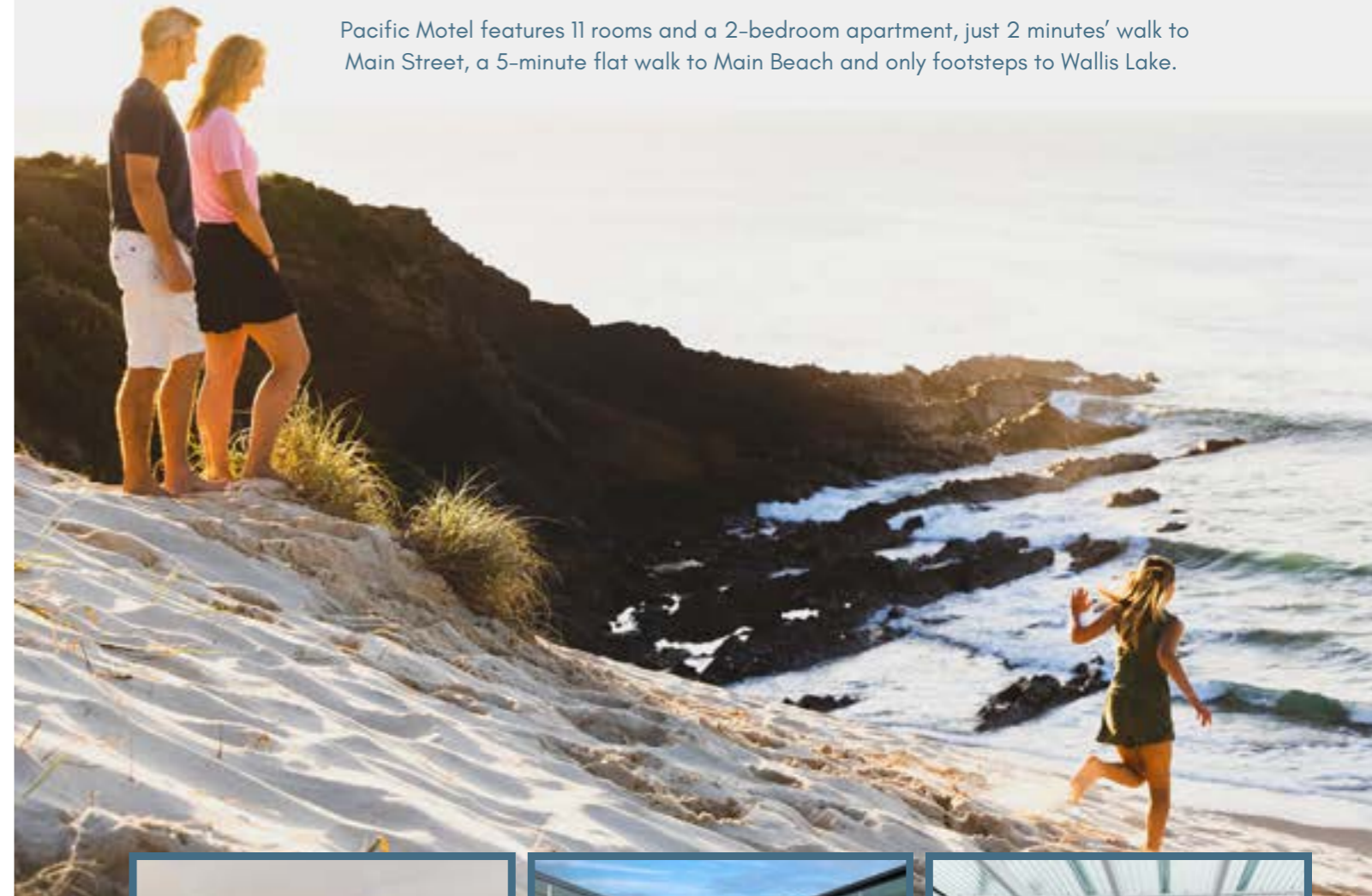
Just a stone's throw from Sugarloaf Point Lighthouse at the eastern end of Boat Beach, this classic beach house offers peace and privacy on the doorstep of several picturesque stretches of sand. It has two queen bedrooms and a loft room with four single beds, making it ideal for an extended family or two families holidaying together. The large bathroom has a shower and toilet, and laundry combined. Central to the property is the light-filled living area, which features a

flatscreenTV, DVD player and a fireplace, with wood supplied in the winter months. This connects to an open-plan dining space and well-equipped kitchen, as well as a wraparound deck with ocean views. With its gas barbecue and outdoor table, it is the ideal setting for alfresco dining. All Seal Rocks properties are supplied with tank water that is not suitable for drinking. Strictly no pets.



The perfect retreat in the heart of Forster

Pacific Motel features 11 rooms and a 2-bedroom apartment, just 2 minutes' walk to Main Street, a 5-minute flat walk to Main Beach and only footsteps to Wallis Lake.



BOOK YOUR NEXT STAY

www.pacificmotel.com.au | 02 6554 7473 | stay@pacificholidays.com.au



Pacific Motel

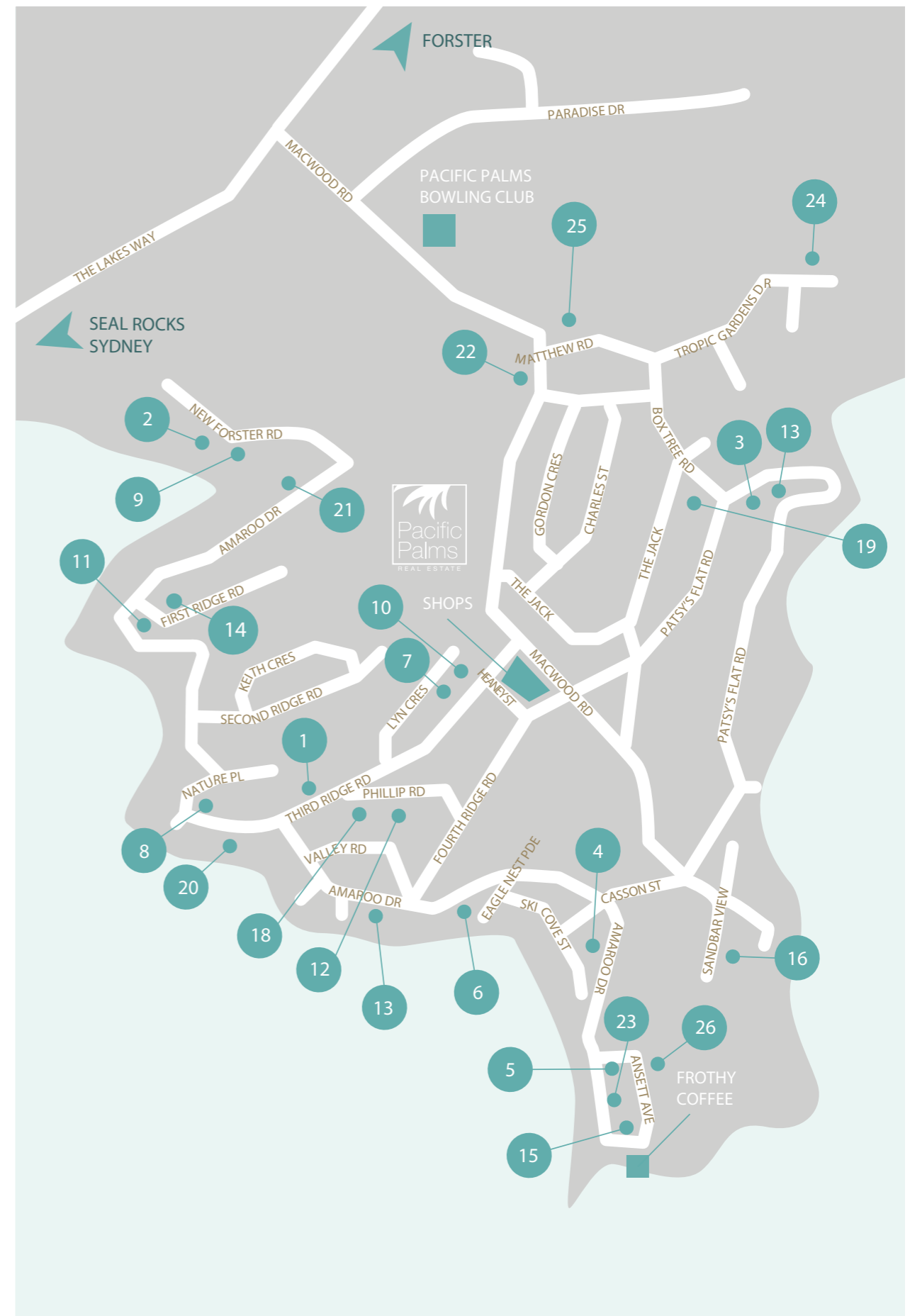


Smiths Lake

If you prefer still waters instead of the open ocean, Smiths Lake is the number one choice in the Pacific Palms area. Shrouded by a lush littoral forest and neatly separated from the sea by Sandbar Beach, this is a family favourite for those eager to enjoy a spot of water skiing, boating, stand-up paddle boarding or windsurfing. With an impressive catchment area spanning 32 square kilometres, you can enjoy all the benefits of this calm, tucked-away waterway. But should you feel a pull for the waves, the picturesque Cellito Beach can be accessed via a boardwalk at the northern end of Sandbar Beach on the eastern side of the golf course. There are barbecues and playgrounds in the lakefront reserve and you can hire boats, canoes, kayaks and catamaran from the Frothy Coffee Boatshed.

MAP INDEX

- 1 3rd RIDGE
- 2 A YARRAANGUNTHI
- 3 AKAMA
- 4 ALLAWAH
- 5 AMAROO SUNSET LODGE
- 6 ARALUEN
- 7 BIRDSONG
- 8 DOLCE VITA @ PEPPERTREE COTTAGE
- 9 DUX NUTZ
- 10 ENDLESS SUMMER
- 11 FYSHWICKS COTTAGE
- 12 HAPPY DAZE
- 13 LAKESIDE RETREAT
- 14 MONTE'S LAKEHOUSE
- 15 REFLECTIONS
- 16 SANDBAR VIEW
- 17 SEASHELLS
- 18 SMITHSTREE HOUSE
- 19 SUN-DAZE @ SMITHIES
- 20 SUNSET AT SANDBAR
- 21 TAMBO LINDO
- 22 THE MAC
- 23 THE NORFOLK
- 24 THE PALM FARM
- 25 THE SHAKA SHACK
- 26 TREETOPS @ SMITHS LAKE





3RD RIDGE

9 THIRD RIDGE ROAD, SMITHS LAKE

Upon entering 3rd Ridge, you'll discover a spacious, open-plan holiday home designed for relaxation and ease. Offering ample space for your boat and a secure enclosure for your furry companion, this property provides a tranquil ambiance. It's conveniently located just a brief drive from the stunning nearby lake and beaches, while the village shops of Smiths Lake are within easy walking distance. Featuring four bedrooms, the main bedroom is situated upstairs with



an ensuite and walk-in robe. Downstairs, there are two bedrooms with queen-sized beds, along with a rumpus room equipped with bunk beds. Air conditioning is available on both levels. The upper level boasts a sizable, secure deck at the rear of the house, overlooking a spacious garden, complete with comfortable seating and a BBQ. Additionally, there's a fire pit in the backyard, perfect for cooler evenings.



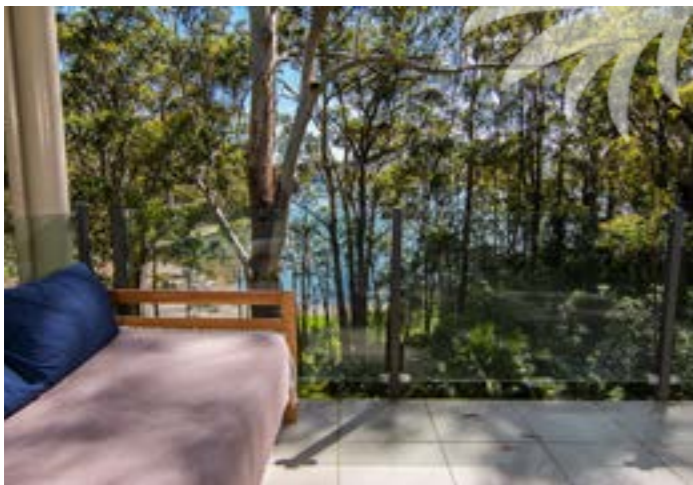
AKAMA

52 PATSYS FLAT ROAD, SMITHS LAKE

Nestled in bushland overlooking the lake, this architecturally impressive home lies on the doorstep of Sandbar's beautiful beaches. In addition to the main house, where you'll find two queen-size bedrooms and another with twin singles, there's a separate studio pavilion with a queen-size bedroom and ensuite. The main bathroom is fitted out with a shower and a deep soak tub while the laundry comes with a washing machine and a dryer. Polished timber floors feature throughout the two-storey residence, with the whitewashed



walls giving it a light and airy feel. The open-plan living area features an LCD flatscreen TV, a CD/DVD home theatre system and a gas fireplace, with the adjacent dining table comfortably seating eight. You can cook up a storm in the chef's kitchen, which boasts modern appliances and a three-metre island bench, or spend the evening barbecuing on the deck. A solar-heated saltwater pool completes the package while the outdoor shower allows you to rinse off after a day in the water. Small pets only.



A YARRAANGUNTHI

15 NEW FORSTER ROAD, SMITHS LAKE

Boasting an absolute lakefront setting, this two-storey home has plenty of room for extended families to spread out. The large decks are the perfect place to watch the sunset at the end of the day, framed by soaring eucalypts and overlooking one of Smiths Lake's tranquil bays. Upstairs you'll find two queen-size bedrooms while the lower level has an additional queen-size bedroom and one with twin singles. The main bathroom is fitted out with a large corner bath, shower and toilet, and the laundry comes complete with a top-loader washing machine and a dryer. Offering the best in indoor/



outdoor living, the upstairs space features polished timber flooring and opens out onto a covered deck with a four-burner gas barbecue, outdoor dining table and comfortable day bed. A fully equipped gourmet kitchen awaits for budding chefs, complete with a coffee machine for making your morning brew. Downstairs is a second living area with a flatscreen TV and DVD player, plus a gently sloping lawn that leads down to the water's edge. Pets are welcome outside only but be aware the property is not fenced.



ALLAWAH

25 SKI COVE, SMITHS LAKE

Surrounded by bushland on the shores of the lake, this home offers privacy and seclusion for large families or two families travelling together. In addition to the two queen-size bedrooms that are located downstairs (one of which has an ensuite), there are also two rooms with queen-size beds and bunk beds upstairs. Three bathrooms ensure there are no queues in the morning while the washing machine and dryer allow you to easily stay on top of laundry. Contemporary artworks decorate the two stylish living spaces and there's a



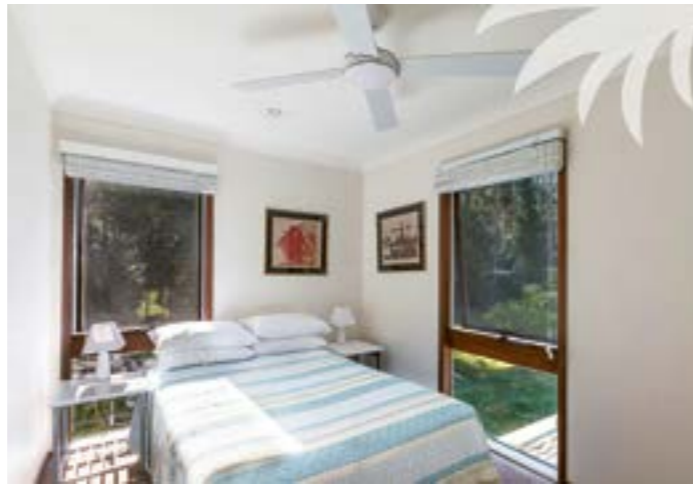
separate games room with a pool table and Internet-enabled Smart TV. Adjacent to the renovated kitchen is an eight-seater dining table, which opens out onto a large barbecue deck overlooking the rainforest. You can take advantage of the direct lake access to enjoy a range of water sports or stroll to the nearby coffee shop that's perched on the edge of the lake. Air-conditioning and Wi-Fi are available throughout the property.



AMAROO SUNSET LODGE

20 AMAROO STREET, SMITHS LAKE

In a fantastic location opposite a lakefront reserve, this four-bedroom home can accommodate up to 12 people, making it ideal for extended families or two families holidaying together. It's just a stone's throw from the Frothy Coffee Boatshed and a refurbished boat ramp for getting out on the water. The master bedroom has a king-size bed and ensuite, while there are two more queen-size bedrooms and a fourth with bunk beds downstairs. In addition to the main bathroom and a separate toilet, you can take advantage of the laundry with washing machine,



 4  3  12

dryer, shower and another toilet. Cook up family favourites in the renovated kitchen in the downstairs living area, which features beautiful stone bench tops and high-end appliances. Adjacent is a 10-seater dining table and cosy living area, complete with a combustion fireplace. At the end of the day, you can unwind with a barbecue on the large deck, which offers views across the lake. Small pets are welcome by application but be aware the property is not fenced.



BIRDSONG

22 LYN CRESENT, SMITHS LAKE

Birdsong presents a contemporary holiday retreat across two levels, nestled amidst a serene rainforest backdrop within the scenic Pacific Palms locale. Its design emphasizes modernity and tranquility, offering an undercover area perfect for social gatherings. The spacious deck invites relaxation on a large, plush sofa while indulging in beloved Netflix series. Stroll to the nearby lake or local shops for your morning caffeine fix.



 5  3  10 

This accommodation boasts amenities such as air conditioning, pet-friendly policies, WiFi access, and a family-oriented environment with an enclosed yard. A garden area enhances the natural allure, inviting guests to indulge in birdwatching amidst lush surroundings. Enjoy proximity to the beach mere minutes away and a brief walk to Smith's Lake shops or the delightful Frothy Coffee spot.



ARALUEN

29 AMAROO DRIVE, SMITHS LAKE

This character-filled chalet-style cedar home, nestled among native palms and eucalypts just metres from Smiths Lake, is ideal for large families or smaller families holidaying together. It has a light and bright interior with soaring ceilings, fans and filtered lake views. Sliding glass doors lead out from the lounge room onto the large deck, which captures the breeze in summer and has an outdoor setting and gas barbecue. There's also a combustion fireplace to keep warm on chilly winter nights. Two bedrooms, one



 3  2  6

with a queen-size bed and the other with a double bed, are located downstairs. The third bedroom, located upstairs in the loft, has a queen bed, single bed and two bunk beds. The bathroom has a shower over the bath, while the modern kitchen has a dishwasher, microwave and freestanding electric oven. There's also a TV, DVD, stereo and CD player, and WiFi and a washing machine and dryer. Off-street for up to three cars is available.



DOLCEVITA @ PEPPERTREE COTTAGE

106 AMAROO DRIVE, SMITHS LAKE

DolceVita @ Peppertree Cottage offers a prime location just 50 meters away from reserve access, allowing guests a convenient stroll to the nearby foreshore. There, a plethora of activities awaits, from serene fishing to adventurous kayaking and exhilarating stand-up paddleboarding, all accompanied by breathtaking sunsets. This cozy haven serves as an ideal base for guests to venture out and discover the array of stunning local beaches. Moreover, it provides an excellent



 4  2  8

starting point for those wishing to embark on the scenic walk and revel in the mesmerizing views from the historic Sugarloaf Point Lighthouse situated at Seal Rocks. Whether seeking relaxation or adventure, DolceVita @ Peppertree Cottage ensures guests an unforgettable experience amidst nature's beauty, with easy access to both serene waters and captivating landscapes that characterize this charming coastal area.



DUX NUTZ

11 NEW FORSTER ROAD, SMITHS LAKE

Creatively designed, this nature retreat nestles amid eucalypts overlooking the lake and is wheelchair friendly on one level. It has two king bedrooms with ensuites and another without, as well as a bedroom with both a bunk bed and triple bunk bed (single over double). In addition to the main bathroom with a bathtub and shower, there's another bathroom with a shower and toilet, plus a laundry with a washing machine and dryer. The striking kitchen is fitted out with a wooden island bench and stone benchtop and connects to a large living/

dining space that has a gas heater, flatscreen TV, CD and DVD players. Above is a loft-style yoga studio with inspiring views. This space opens out onto a large deck overlooking the lake where you can unwind at the end of the day. There's another family room downstairs where kids can retreat to, plus a small pool, a cubbyhouse and direct lake access. Wi-Fi is available throughout this eco-friendly property, which has been sustainably designed with low VOCs and solar power.



FYSHWICKS COTTAGE

148 AMAROO DRIVE, SMITHS LAKE

Simple and charming, this classic cottage overlooks a peaceful bay on the lake's eastern shore. It's a short stroll from the Frothy Coffee Boat Shed and a revamped boat ramp, which offers easy access for fishing and kayaking on the lake. Two bedrooms make it ideal for families, with the queen-size bedroom offering lake glimpses and the other room with a triple bunk bed (single over double) for kids. The practical bathroom comes complete with a shower,

top-loader washing machine and adjoining toilet while the kitchen has a stovetop, microwave and dishwasher. An open-plan living/dining area with a TV and DVD player opens out onto the front deck, which is visited by a variety of birdlife throughout the day. For your peace of mind, there is off-street parking for two cars, plus plenty of room for a boat. Strictly no pets. BYO linen – pillows, blankets and doonas are supplied (linen hire is available on request).



ENDLESS SUMMER @ SMITHS

24 LYN CRESCENT, SMITHS LAKE

Situated at the end of a quiet cul-de-sac opposite a bush reserve, this stunning, five-bedroom property invites you to unwind the moment you pull into the drive. It's just a short stroll from cafes and bakeries where you can pick up morning treats, as well as being within easy access to all of the water pursuits of Smiths Lake. Set across two levels, Endless Summer @ Smiths has a master bedroom with a king-size bed, ensuite bathroom and private balcony. Also on the upper level is a room with two king single beds and another with a triple bunk bed. Downstairs are two more

bedrooms, one with a double bed and the other with a queen-size bed and private balcony. There are bathrooms with toilets and showers on both levels. The gorgeous open-plan living and dining space has two large lounges and a 65-inch smartTV, as well as a spacious dining table that can seat eight. An island bench with barstools is a feature of the whitewashed kitchen, which is also equipped with an oven/stove, dishwasher and coffee machine. The property has a dedicated theatre room with an 85-inch smart TV and a soundbar, plus a table tennis table.



HAPPY DAZE

20 PHILLIP ROAD, SMITHS LAKE

Experience sheer delight at this charming 4-bedroom residence nestled in the vibrant center of Smiths Lake, offering an ideal haven for enthusiasts of boating, surfing, fishing, and swimming. Gaze upon a picturesque vista of waving palm fronds from the expansive open-plan lounge and dining spaces that seamlessly flow onto the sheltered deck featuring a BBQ and spacious outdoor dining locale. Smiths Lake's prime location places it merely 7 minutes

away from the nearest beach, allowing for leisurely strolls. Wander to the local shops for a freshly brewed cup of coffee, relish in serene sunsets by the lake, or indulge in a kayaking escapade by renting from Frothy Coffee. Embrace the tranquility and joyous moments awaiting you at Happy Daze, where relaxation and adventure harmoniously coexist in this idyllic setting.





LAKESIDE RETREAT @ SMITHS LAKE

45 AMAROO DRIVE, SMITHS LAKE



Offering an idyllic waterfront setting, this multi-storey property perches on the edge of the lake, just a short stroll from Frothy Coffee Boat Shed. The master bedroom features vaulted ceilings and an ensuite, while the other queen-size bedroom, double bedroom and twin single room all offer lake views. As well as the large bathroom with a shower, there's a laundry with a front-loader washing machine and bar fridge. The open-plan living/dining

area connects to a fully equipped kitchen where you can enjoy water views while you cook and there's a loft-style retreat with a TV and DVD player. Decks on both the upper and lower levels ensure you can make the most of the Pacific Palms' outdoors lifestyle while taking advantage of the gas barbecue. In addition to a single garage, there's space to park the boat out back and a grassy lawn where kids can play in the front yard.



MONTE'S LAKEHOUSE

3 FIRST RIDGE, SMITHS LAKE



Unwind and savor the serene vistas of Smiths Lake from either of the two expansive balconies provided by this exceptional property. Alternatively, engage in lively entertainment with a convivial round of pool in the spacious downstairs family or rumpus room. Stroll leisurely to the lakefront for a delightful sun-soaked experience or take a brief drive to explore the numerous nearby beaches dotting the area. Monte's Lake

House stands as an ideal retreat, catering to your desire for quality time with loved ones. Whether seeking a tranquil escape or an adventure-filled getaway, this abode ensures a perfect haven for cherished moments and memorable gatherings with family and friends.



REFLECTIONS

2 AMAROO DRIVE, SMITHS LAKE



Ideally situated opposite a lakefront reserve and the Frothy Coffee Boatshed, this two-storey home is the perfect base for holidaying in the Pacific Palms region. Upstairs you'll find a queen-size bedroom and triple bunk bedroom (single over double) while downstairs are two queen-size bedrooms, with reverse-cycle air-conditioning and Wi-Fi available throughout. The main bathroom has a shower, basin and separate toilet while the laundry is equipped with a washing machine and dryer, plus another shower

and toilet. Designed with sky-blue cabinets, the kitchen comes fully equipped and connects to an open-plan living/dining space that features a TV, DVD player and stereo. Downstairs is a large family room with a flatscreen TV and a DVD player, as well as a carport that can accommodate two or three cars. During the day, you can make use of the kayaks and canoes that are available to guests on the lakefront, then return to the large deck for a sunset meal cooked on the six-burner barbecue.



SANDBAR VIEW

4 SANDBAR VIEW PLACE, SMITHS LAKE



Aptly named for its stunning views towards Sandbar Beach, this large property nestles in natural surrounds on the edge of Symes Bay. With room to accommodate eight people, there's a master bedroom and another with three single beds, as well as a room with a bunk bed. The main bathroom has a shower and toilet while the downstairs laundry features an extra shower and toilet, as well as a washing machine and

a dryer. The open-plan living/dining area connects to a fully equipped kitchen and opens out onto a large wooden deck with a gas barbecue and outdoor seating. A family lounge can be found downstairs with a TV, DVD player and sound system, plus two single beds.



SEASHELLS

58 PATSYS FLAT ROAD, SMITHS LAKE

This striking architecturally designed property nestles amid trees overlooking the sparkling waters of Symes Bay. It has all the creature comforts you would expect of a luxury home, with a few extra touches that include an outdoor fire pit, daybeds and a double hammock. All four bedrooms are located downstairs, including two queen-size bedrooms (one with an additional triple bunk bed (single over double), a double-bed rumpus room and a room with bunk beds plus a single bed. The main bathroom has a shower and a freestanding bath, with an additional hot water shower

 4  2.5  12

outside so you can rinse off after a day in the water. Upstairs is the open-plan living and dining space, which features a wall-mounted TV in the lounge and a stylish modern kitchen with breakfast bar-style seating. This connects to a covered balcony with an outdoor dining table that offers stunning lake views. By day, you can take advantage of the kayaks that are available for guest use or head to Cellito Beach before kicking back beside the outdoor fire pit while enjoying the natural beauty of Smiths Lake.



SMITHS TREE HOUSE

8 PHILLIP ROAD, SMITHS LAKE

Perched above Smiths Lake's canopy, this expansive holiday retreat is conveniently located within a leisurely stroll to nearby shops, ensuring your morning coffee fix is just moments away. Situated close to the tranquil lake, it's an ideal spot for a leisurely fishing session. The lush surroundings offer a serene ambiance, inducing a sense of tranquility and repose. This airy and inviting holiday abode boasts three generously sized bedrooms. Among them, one features a luxurious king-

 3  1.5  6

sized bed, while the remaining two offer comfortable queen-sized accommodations. It's an ideal setup for couples seeking a romantic getaway or a small family in search of a relaxing vacation. The main bathroom includes a bathtub, a shower, and a toilet, while an additional toilet is conveniently housed within the laundry area. Gazing out onto the verdant landscape, this charming home promises a serene escape, allowing you to unwind and revel in the peaceful beauty of its surroundings.



SUN-DAZE @SMITHIES

14 BOX TREE RD, SMITHS LAKE

Conveniently located near the shores of Smiths Lake, this attractive holiday home can comfortably accommodate one large family or two. Smiths Lake is a water sports enthusiast's dream, with everything from windsurfing and water-skiing to stand-up paddle boarding and fishing right on your doorstep. The single level home has a king bedroom with an ensuite bathroom and walk-in robe, as well as two queen bedrooms with built-in robes. The fourth bedroom is equipped with two bunk beds, making it ideal for kids, and there's a separate

 4  2  10

lounge area. The open-plan living and dining area is the heart of the home, with a comfortable sofa, spacious table and flatscreen TV. This connects to the whitewashed modern kitchen, which features high-end appliances and an island bench that doubles as a breakfast bar. As well as a covered alfresco entertaining area, Sun-Daze has a fully-fenced, in-ground pool, a large grassy lawn and a firepit. Guests also enjoy access to the property's double lock-up garage and private boat storage ramp.



SUNSET AT SANDBAR

85 AMAROO DRIVE, SMITHS LAKE

Featuring a fully fenced yard that's pet-friendly, this modern property is ideal for families who want to holiday with their fur babies in tow. It's positioned right on the water's edge, with the kayaking, boating and fishing of Smiths Lake all just a stone's throw away. In addition to a queen and a king bedrooms, there's a kids' room with a bunk bed and a triple bunk bed (single over double), plus a large bathroom with a corner spa and separate shower. The bright and airy kitchen is fully equipped with a stove, oven, microwave and dishwasher while connecting to an open-plan living/

 3  2  8

dining space. Here you'll find a flatscreen TV and a DVD player, with the lounge just steps from a covered deck with an outdoor table and gas barbecue. A staircase leads down into the backyard and patio where there's an additional outdoor setting, plus a laundry with a washing machine, dryer, shower and toilet. In the warmer months, you have the lake and beaches as your playground, while in winter, you can cosy up beside the combustion heater or indulge in the property's private sauna.



TAMBO LINDO

181 AMAROO DRIVE, SMITHS LAKE

What's not to adore about this residence? Nestled in the serene embrace of Smiths Lake, this expansive and charming abode promises an all-encompassing holiday experience where venturing elsewhere becomes unnecessary. Simply unwind, soak up the tranquility, and relish the moments. This lakeside haven offers seamless access to sandy shores for swimming and a convenient spot for docking your boat. Tambo Lindo boasts a private 3-hole miniature golf course, an outdoor swimming pool, and a fire pit—a paradise tailor-made for leisurely days and cozy evenings. Complete with



full linen, including beach towels, a swimming pool, a 3-hole golf course, and an exceptional covered outdoor BBQ area featuring a fully equipped kitchen, this property invites seamless entertainment. Moreover, it's pet-friendly, ensuring your furry companions can partake in the retreat. The house comprises two bedrooms on the upper floor while the third bedroom, along with a bathroom and kitchenette, resides downstairs. Please note, there's no internal access between the two levels. While Tambo Lindo warmly welcomes pets, it lacks a fenced enclosure.



THE MAC

4 MACWOOD ROAD, SMITHS LAKE

The Mac residence epitomizes spaciousness, privacy, and abundant natural light across its two-story layout. Nestled atop Macwood Road, it offers captivating vistas of Sandbar and convenient proximity to Celito Beach. This haven boasts palm-fringed panoramas of lakes and oceans, equipped with WiFi, air conditioning, a double garage, two lounge areas featuring TVs, and a pet-friendly policy, culminating in an all-encompassing experience. For boating enthusiasts, ample space for your vessel awaits, conveniently situated near



the Frothy Coffee at Smiths Lake boat ramp. The primary bedroom, situated upstairs, boasts a Queen bed and breathtaking views of Sandbar and the ocean, complemented by a spacious ensuite. Downstairs, the second bedroom features a queen bed, while the third bedroom also offers a queen bed and the fourth bedroom comprises two single beds. The main bathroom downstairs features a luxurious deep soak bathtub, with an additional separate powder room for convenience.



THE NORFOLK

14 AMAROO DRIVE, SMITHS LAKE

Located near the saltwater inlet of Amaroo Point, this four-bedroom property offers sweeping views across the waters of the lake. Set across two levels, it features raked timber ceilings and polished floors while offering plenty of outdoor spaces for dining and relaxation. There are two queen bedrooms with ensuites, plus another queen bedroom and a kids' room with two bunk beds. A large bathroom with shower, spa bath and toilet can be found downstairs, with an additional powder room upstairs. Cook up a storm in the



modern kitchen that comes complete with all the appliances you'd expect or relax in the open-plan living/dining space with its plasma-screen TV and DVD player. There's also a rumpus room downstairs where kids can retreat, and a laundry with a washing machine and a dryer. After memorable days spent on the lake or at the beach, you can return for a sunset barbecue on the large deck or kick back in the fully enclosed yard where pets are welcome.



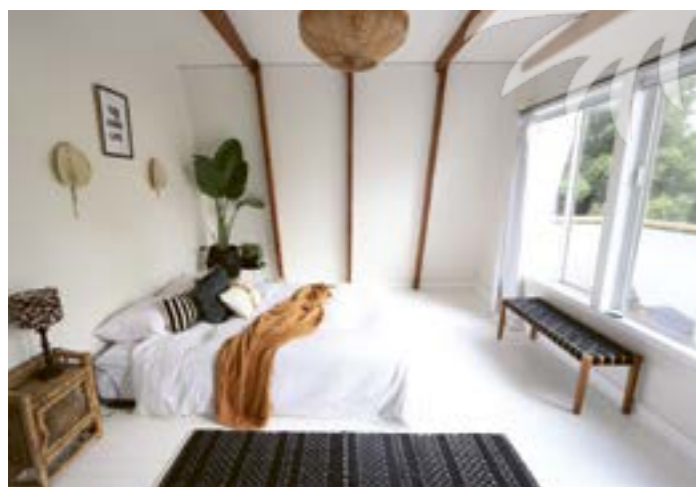
THE PALM FARM

16 PALM CLOSE, SMITHS LAKE

Escape to a serene rural haven boasting a spacious family residence and a luxurious pool - an ideal getaway offering an all-encompassing experience! This distinctive property exudes uniqueness, offering ample privacy and vastness. Nestled in a rural landscape, it sits within a leisurely stroll from the Bowling Club, in proximity to picturesque surf beaches, a serene lake, and a golf course. Accommodating between 10 to 12 guests, this sprawling 5-bedroom abode on



expansive grounds is equipped with an array of amenities, promising an unforgettable family holiday or a rejuvenating retreat for friends. Surrounded by majestic trees and teeming with vibrant birdlife, the property provides a tranquil oasis with its exclusive access, creating a sensation of leaving the world behind. The Palm Farm stands as an exceptional and unparalleled holiday destination, promising an unparalleled experience for all who visit.



THE SHAKA SHACK

1 MATTHEW ROAD, SMITHS LAKE

Exuding a boho beach vibe, this renovated property fuses 1970s charm with contemporary comforts. It's surrounded by rainforest near the shores of Smiths Lake while being just a short drive from the surf breaks at Cellito Beach, Blueys/Boomerang and Seal Rocks. It can comfortably accommodate small families, with the queen-size bedroom connecting to a private deck while the double bedroom overlooks bushland. The contemporary kitchen is fitted out

with stainless steel appliances, a microwave and an Italian stovetop coffee brewer, while the bathroom has a shower over the bath and a toilet. In the living/dining area, you'll find a six-seater table and TV where you can relax at the end of the day, plus a bohemian hammock chair for retreating with a good book. With only one neighbour, this blissful sanctuary also boasts front and rear decks for enjoying the Pacific Palms' outdoors lifestyle.



TREE TOPS @ SMITHS LAKE

6 ANSETT AVENUE, SMITHS LAKE

Sitting in the tree tops overlooking Smiths Lake, is this modern light and bright holiday home. The holiday home sits on a large bush block located within walking distance of Frothy Coffee and the local playground. A large deck wraps across the front allowing an excellent outside living environment for all guests. A gas BBQ is provided for your enjoyment and an outside shower for when you return from the lake and beach. The home boasts modern, light and

bright open plan living areas with plenty of ceiling to floor glass windows allowing the sun light to shine through and provide guests with views across the Tree Tops of Smiths Lake. The kitchen is fully equipped with everything you could require to cook up a storm. There is air conditioning and also a wood fireplace for those cooler nights (initial bag of wood supplied during Winter).



COME FOR A HOLIDAY, *Stay Forever*

Love your Pacific Palms holiday so much you can see yourself living here? The Pacific Palms Real Estate sales team can help you find your dream home in the local area, whether it's a weekend retreat, a permanent abode or an investment property.

We work out of two strategically located offices in Blueys Beach and Smiths Lake. We can also assist with your permanent rental requirements. If you own a property in Pacific Palms or the surrounding area and you're thinking about renting your property, give us a call.

MATT HEALEY - 0438 212 270
Licensed Real Estate Agent
Auctioneer

SHARON TEAGUE - 0438 412 581
Licensed Real Estate Agent

CARYS ADAMS - 0423 761 781
Licensed Real Estate Agent

SAMANTHA SEMMENS - 0438 412 317
Licensed Real Estate Agent
Property Stock and Station Agent

MICHELLE MILLARD - 0439 170 983
Property Manager
Licensed Real Estate Agent

pacificpalmsrealestate.com.au

Beaches office 6554 0500 • Lakes office 6554 4800

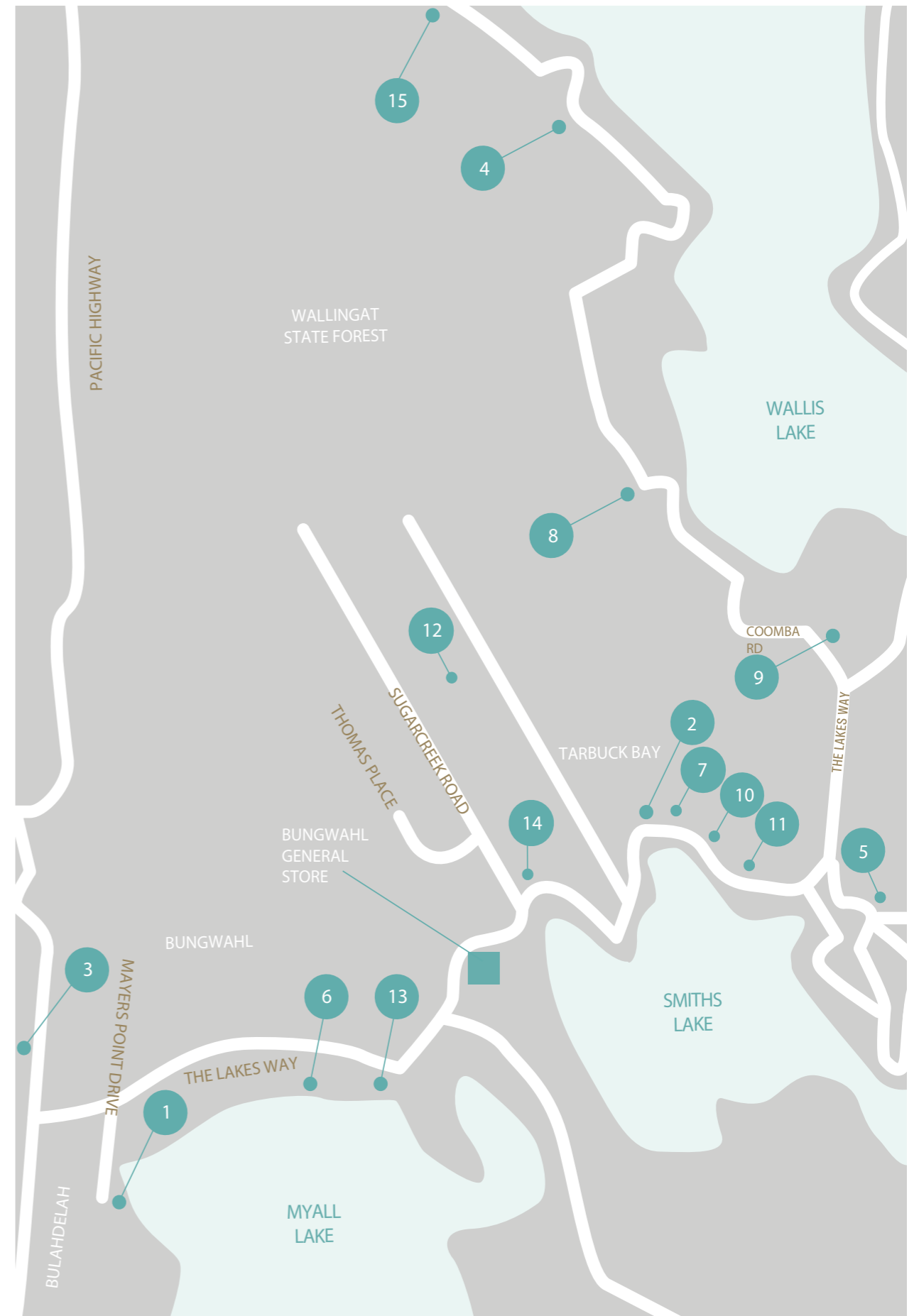


Surrounding areas...

If you're looking for a quieter stay, why not consider booking a holiday home in one of the smaller towns in Pacific Palms, such as Bungwahl, Charlotte Bay or Mayers Flat? The historic village of Bungwahl is located on The Lakes Way, near the turnoff to Seal Rocks. It has a general store, petrol station, community hall and a primary school. Charlotte Bay is another small community between Smiths Lake and Blueys Beach, offering the best of both worlds. Closer to the Pacific Highway you'll find Mayers Flat, also on The Lakes Way, on the shores of Myall Lake.

MAP INDEX

- | | |
|----|--------------------------------|
| 1 | ALEDA HOUSE ON THE MYALL LAKES |
| 2 | BALI BY THE BAY |
| 3 | BUSTERS RUN |
| 4 | BYADBO |
| 5 | CHARLOTTE'S HIDEAWAY |
| 6 | CHILL OUT |
| 7 | CLAY LAKE HOUSE |
| 8 | COOMBA LAKEHOUSE |
| 9 | KARINGAL |
| 10 | MARINE VILLA |
| 11 | TARBUCK CABIN |
| 12 | THE LAKE HOUSE |
| 13 | TUPPY'S ON THE LAKE |
| 14 | WAMWARRA |
| 15 | WATTAVIEW |





ALEDA HOUSE ON THE MYALL LAKES

131 MAYERS POINT ROAD, MAYERS FLAT



Perched atop Mayers Point overlooking Myall Lake, this spectacularly positioned home offers everything you need for a comfortable getaway. It exudes country charm while still offering modern conveniences such as air-conditioning and a Sunbeam coffee machine. There are two queen-size bedrooms with ceiling fans, plus an additional room with a triple bunk bed for kids. In addition to the main bathroom, which features a shower and front-loader washing machine, there's a second bathroom with a toilet and shower next to the timber deck. You can take advantage of the modern

appliances in the well-equipped kitchen or cook outdoors on the barbecue while enjoying the water views. Plenty of books, board games and DVDs await in the lounge room, which features a wall-mounted Smart TV, DVD player and Bluetooth speakers. Lakeside, you'll find a two-person canoe for paddling along the bird-filled shores while a 4x4-access boat ramp is available at the end of Mayers Point. Bungwahl, Seal Rocks and the township of Bulahdelah are all just a short drive away.



BALI BY THE BAY

11 WINDSOR STREET, TARBUCK BAY



This incredible property enjoys an exceptional setting nestled amid the stunning surroundings of Blueys/Boomerang and Seal Rocks. Situated along the picturesque shores of Smith Lake at Tarbuck Bay, this exquisite fully fenced abode boasts four spacious bedrooms and three bathrooms. It encapsulates all the allure and conveniences one anticipates in a luxurious tropical getaway. Perfect for families, the residence offers an array of amenities, ensuring a delightful stay. Stay connected with the included Wi-Fi, cozy up by the fireplace, and relish the

expansive fenced yard, ideal for both kids and pets to frolic in safety. Moreover, the accommodation is equipped with air conditioning for added comfort. What's more, the property generously provides full linen, alleviating the need for packing bulky sheets and towels—simply bring your beach towels and immerse yourself in the coastal bliss. Experience the epitome of relaxation and convenience in this splendid haven, promising an unforgettable retreat amidst nature's beauty.



BUSTERS RUN

210 REYNOLDS ROAD, TOPI TOPI



Buster's Run" formerly known as "Forestdale" is a pet friendly accommodation situated in Topi Topi, Mid North Coast. Is fifteen minutes from Bulahdelah along The Lakes Way towards the beautiful beach of Seal Rocks. Buster's Run is situated on 25 Acres of open fields, rolling hills and studded with tall trees filled with beautiful bird life. The private country style home is set high overlooking the whole green countryside valley of Mayer's Flat. Buster's Run is a country style house, offering open, yet private outlooks



from all rooms. Upstairs consists of an open style kitchen; lounge, with 3 bedrooms and a bathroom. Including a combustion fire place which makes the home very cozy in the Winter months. Downstairs is a Billard Room including a TV Area and a separate bedroom those extra guests with a shower and toilet in the laundry. Outside there is a BBQ and an enormous old campfire site to sit around and spin a yarn or two.



BYADBO

37 AROONA STREET, COOMBA PARK



Byadbo is a newly renovated country farmhouse with a wide wraparound veranda. It can accommodate up to 7 people across its 3 separate bedrooms (2 king beds, 2 king single bunks, and a fold-up single bed). The house is private and secluded, with stunning views from all the rooms. You can enjoy a sunrise over a rolling misty field, or in the evening light the fire pit and relax with friends watching the sunset. There is no compromise on comfort or convenience at Sunset Ridge. The bedrooms are spacious and have electric blankets on the



master beds. The kitchen is fully equipped with a 5-burner gas cooktop, 900mm oven, microwave, french door fridge, air fryer, and nespresso coffee machine. The bathroom provides a separate bath and shower, and a walk through internal laundry with washing machine, dryer, iron and ironing board, and an undercover clothesline. The spacious lounge room has a flat screen TV with Chromecast, with a 5 seat corner lounge, separate armchairs and an awesome wood heater perfect for those chilly winter nights.



CHARLOTTE'S HIDEAWAY

208 CHARLOTTE BAY STREET, CHARLOTTE BAY

This modern 2-bedroom holiday home has everything you need for a relaxing stay. It is spacious and set in a space with a peaceful outlook perfect to relax & unwind overlooking the waters of the Wallis River in Charlotte Bay. With ducks meandering around the gardens, and a fire pit out the back for those cooler nights it has been designed with peace & quiet in mind. Relax on the corner outdoor lounge overlooking the calm river. Only moments from stunning local beaches. There is also a well-stocked supermarket with take away food options just a short walk away. Minutes from stunning local



beaches like Blueys Beach, Boomerang Beach and Elizabeth Beach. You are welcome to bring your kayaks/canoes to meander down the creek to Wallis Lake or make use of the paddleboards supplied. The Recky Club at Elizabeth Beach is just down the road for lunch or dinner options, be sure to stop long enough to take in the breathtaking sunsets. We supply initial firewood for the firepit during Winter and there is plenty of kindling about to get you started. Additional firewood supplies can be purchased from the servo just down the road.



CLAY LAKE HOUSE

17 WINDSOR STREET, TARBUCK BAY

Welcome to 'Clay Lake House', an enchanting three-bedroom retreat nestled in the pristine surroundings of Tarbuck Bay, NSW. Located at 17 Windsor St, this delightful holiday home comfortably sleeps up to six guests, making it ideal for families, groups, or couples seeking a serene getaway. Step inside, and you'll be greeted with tasteful decor and a variety of modern amenities. The fully-equipped kitchen boasts a high-spec coffee machine for your morning brew, a dishwasher for easy clean-up, and essential appliances



like a microwave oven, refrigerator, stove, and toaster. The open-plan dining area offers the perfect setting for heartfelt family meals. You'll find three cozy bedrooms, each adorned with comfortable bedding and linen. The house features one well-appointed bathroom for your convenience ensuring no morning queues. Clay Lake House also offers a spacious single-car garage, ensuring secure parking. It's a pet-friendly property too, so you won't have to leave your furry friend behind!



CHILL OUT

2456 THE LAKES WAY, BUNGWAHL

Welcome to 'Chill Out', your private haven tucked away in the heart of Bungwahl, NSW, precisely located at 2456 The Lakes Way. Nestled in tranquility, this rural abode boasts breathtaking lake views and is purpose-designed for a couple's retreat or a solo sanctuary, accommodating a maximum of 2 guests. The fully equipped kitchen comes with every modern convenience you may need. Relax and get cozy by our indoor fireplace, a treat during colder months. Not to forget our unique wood heater, which adds a charming touch to the ambiance. For your entertainment, we offer a TV and a comfy dining area for you to



enjoy every meal with a serene lake view backdrop. Outside, the covered area leads on to the mesmerizing garden area, ideal for a quiet retreat overlooking the lovely lake. The property offers a private garden or backyard, giving you an intimate spot to soak up the sun or stargaze. Located at an enviable address, Chill Out offers up to a 10% discount, making it a hot deal you wouldn't want to miss! For a smooth check-in, you'll be accessing the house key via a keybox. Unplug from your digital life, unwind amidst nature, and immerse yourself in the tranquility that Chill Out offers.



COOMBA LAKEHOUSE

1286 COOMBA ROAD, COOMBA BAY

A wrap around veranda welcomes you as you bask in the views and sounds of local birdlife. The home greets you with a spacious combined kitchen, living and dining area with floor to ceiling bay windows to breathe in the magnificent scenery. Down the hallway are three spacious bedrooms, all with expansive lake views which you can view from the comfort of your bed. A large bathroom features an antique cast-iron bath to soak in after a day on the water. There is also an additional powder room and full laundry room. In front of the house is



half a kilometre of absolute water frontage of Wallis Lake for you to enjoy. With a mixture of sand and mud flats along with your very own private reef, the property's surrounding waters have world class fish and crabbing with both blue swimmer and mud crab caught meters from the river bank. The reef is known for holding many large bream and the extensive flathead ground beyond hold record breaking lizards! The properties eight acres has many special spots to enjoy. It has a large trampoline and various areas to bask in the views.





KARINGAL

98 COOMBA ROAD, CHARLOTTE BAY

Fronted by a sweeping balcony, this impressive home is ideal for a combined beach and country holiday, set between the sands of Blueys Beach and Wallingat National Park. It's been designed for extended families or two families holidaying together, with four bedrooms that all boast their own ensuites. Parents can stay in the king or queen bedrooms while kids can choose between twin singles and bunk rooms. A contemporary, open-plan living area



 4  4  10

connects with a fully-equipped gourmet kitchen while the dining table seats 10. In addition to a combustion fireplace in the lounge area, there's a plasma TV with DVD and CD players, plus plenty of boardgames. The laundry has both a washing machine and a dryer. You can listen to the birdcalls in the surrounding bushland while relaxing on the covered balcony, which has a large dining table and gas barbecue. Pets are considered by application only.



TARBUCK CABIN

19 THE LAKES WAY, TARBUCK BAY

Unwind and indulge in the tranquil beauty of Tarbuck Cabin, where you can recline amidst the natural splendor, gazing through the lush foliage at the glistening expanse of Tarbuck Bay. This exquisite retreat offers an escape without the hassle, mere moments away from our pristine beaches. Tarbuck Cabin boasts a pet-friendly environment, ensuring your furry companions can join in the getaway. Stay connected with WiFi, cozy up by the fireplace, and relish the convenience of being just a stone's throw away from Tarbuck



 2  2  8 

Bay. Immerse yourself in a world of leisure mere minutes from the sandy shores and local conveniences. Enjoy easy access to nearby food markets, a plethora of shops, charming cafes, lively clubs, and delectable restaurants. For outdoor enthusiasts, indulge in various activities including fishing, boating, swimming, surfing, and the mesmerizing experience of watching whales and dolphins. Parking is hassle-free with off-street availability.



MARINE VILLA

26 WINDSOR STREET, TARBUCK BAY

Explore this exquisite holiday retreat, an elegant abode nestled near breathtaking beaches like Boomerang Beach. Delight in serene fishing escapades at Smiths Lake or Tarbuck Bay. Discover the allure of Seals Rocks beaches and nearby National Parks. This air-conditioned haven boasts a single level design, encompassing three bedrooms and a charming three-way bathroom with a luxurious bathtub adjoining the main bedroom, complemented by a separate toilet. Unwind on the outdoor verandah, savoring



 3  1  6

moments of pure relaxation. Unique details, such as vibrant pop art adorning the interior doors, infuse the space with an atmosphere of playful delight. Should the ocean beckon, the scenic Cellito Beach is easily accessible via a boardwalk at the northern edge of Sandbar Beach. Revel in the tranquility of this secluded waterway while remaining just minutes away from the splendors of Bluey's Beach, Elizabeth Beach, and Seal Rocks.



THE LAKE HOUSE

111 TARBUCK ROAD, TARBUCK BAY

The Lake House is located within acreage just outside Tarbuck Bay, close to Seal Rocks, Wallingat National Park and stunning local beaches – where you can sit, sip and relax to your heart's desire! You will find breathtaking views of the lagoon and surrounding bushland, where you can venture for a walk around the entire lagoon enjoying the natural birdlife and tranquillity. The lagoon was excavated when the property was first being established, and where a swamp and island were made for the local birdlife and to create a natural eco-system.



 5  2  10 

Each luxe bedroom has their own courtyard space overlooking the serene natural landscape. The Lake House was architecturally designed by Sydney architect Kevin Snell, whose designs and eco-credentials stood out above all others. We have a veggie patch out the back that you are welcome to gather seasonal produce during your stay. The Lake House has an outdoor sauna and separate yoga studio. Please contact us for rates.



TUPPYS ON THE LAKE

2458 THE LAKES WAY, BUNGWAHL

Boasting an idyllic setting overlooking Corrigans Bay, this charming property is surrounded by bushland on the shores of Myall Lake. It exudes a classic holiday cottage feel while being equipped with modern touches, such as reverse cycle air-conditioning. The master bedroom has a queen bed while the second also has a queen bed, a single bed and a trundle bed. The renovated bathroom has a shower, toilet and spa bath while the laundry is equipped with a washing machine and a dryer. Polished timber floors feature throughout the living/



dining area, which centres around a combustion fireplace to keep you warm on chilly evenings. Watch your favourite shows on the flatscreen TV or listen to music through the Bluetooth-enabled speakers while cooking in the kitchen. Complete with outdoor furniture and a gas barbecue, the large timber deck overlooks an expansive lawn where kids can play. Pets are most welcome to stay with you, although the property is not fully enclosed.



WAMWARRA

2851 THE LAKES WAY, BUNGWAHL

Wamwarra House takes its name from the neighboring creek, positioning itself idyllically between Pacific Palms and Seal Rocks. Revel in leisurely days spent at the nearby beaches or tranquil lakes, then return to the serene embrace of this splendid rural property. Boasting three bedrooms and sprawling across acres, this abode offers an array of amenities, ensuring an unforgettable experience for families or friends seeking a



getaway. Surrounded by majestic trees and teeming with vibrant birdlife, the property exudes an atmosphere of tranquility and seclusion, further enhanced by its private access. In this haven, one can effortlessly disconnect from the outside world and immerse themselves in the peaceful sanctuary that Wamwarra House graciously offers.



WATTAVIEW

751 SHALLOE BAY ROAD, SHALLOW BAY

Wattaview says it all - the most stunning views of the Wallingat River and rural landscapes. Unique luxury rustic rural retreat for up to ten people close to local beaches and lakes within the Pacific Palms oasis. Wattaview @ Wallingat is set in a quiet location on a picturesque rural acreage cattle property and features 4 bedrooms, main bedroom with a king bed, 2 bedrooms with queen beds, and the 4th bedroom with 4 single beds. The main bedroom with ensuite has a claw foot bathtub - complete with chandelier. At night see



the most amazing starry nights or listen to the sounds of frogs or animals of the night that surround the valley. This unique rural home has a large living area opening directly onto the huge outdoor covered deck overlooking the most stunning views of Wallingat River, a wood fireplace for those winter months, and a modern, fully equipped kitchen with dishwasher and coffee machine. There is a large outdoor entertaining deck surrounded by an acre of totally private country gardens with an outdoor fire pit.



Image courtesy of Byadbo



pacificpalmsolidays.com.au